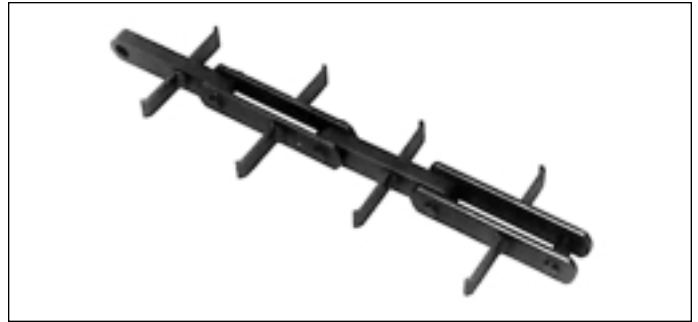
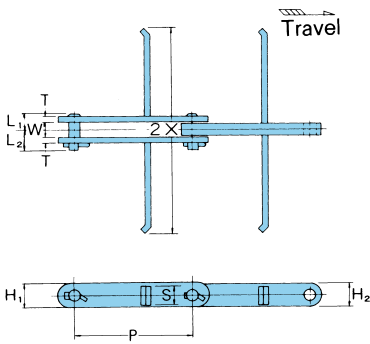


NF Block Chain for Flow Conveyor

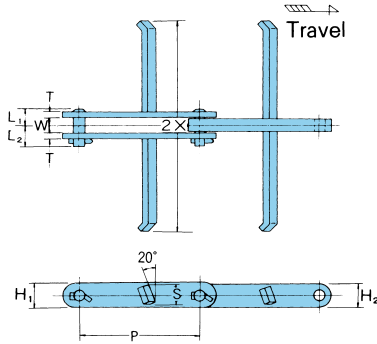
Special alloy steel provides greater tensile strength and this chain's simple construction provides greater allowable wear. This chain is ideal for conveying material that is abrasive, wet, or hot. The base chain consists of outer link plates, inner link plates, and pins. Attachments can be welded onto the base chain.



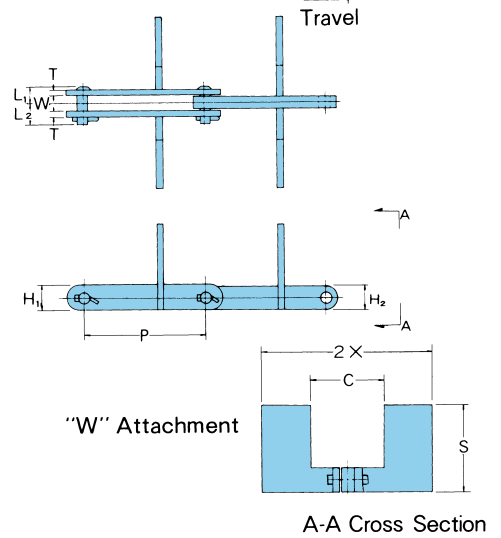
"L" Attachment



"KL" Attachment



"W" Attachment



NF Block Chain Specifications

All dimensions are in inches unless otherwise indicated.

Chain Number	Pitch	Width Between Outer Link Plates	Link Plate			Pin		Approx. Weight (lbs./ft.)	Average Tensile Strength (lbs./ft.)
			H ₁	H ₂	T	L ₁	L ₂		
	P	W	H ₁	H ₂	T	L ₁	L ₂		
NF30150	5.905	.917	1.752	1.500	.311	.925	1.260	5.31	69,300
NF30200	7.874	.917	1.752	1.500	.311	.925	1.260	5.11	69,300
NF56200	7.874	1.161	2.500	2.126	.374	1.122	1.555	9.88	124,300
NF56250	9.842	1.161	2.500	2.126	.374	1.122	1.555	9.74	124,300

NF Block Chain Attachment Specifications

Chain No.	Flow Model No.	"L" Attachment			"KL" Attachment			"W" Attachment			
		2X	S	Additional Weight per Att. (lbs./att.)	2X	S	Additional Weight per Att. (lbs./att.)	2X	S	C	Additional Weight per Att. (lbs./att.)
NF30150	FC150	5.315	1.339	.40	5.315	1.339	.40	5.315	3.150	3.150	.70
NF30150	FC200	7.283	1.339	.57	7.283	1.339	.57	7.283	4.528	3.346	1.50
NF30150	FC270	9.843	1.339	.79	9.843	1.339	.79	9.843	5.512	4.134	2.46
NF30150	FC350	12.992	1.339	1.63	12.992	1.339	1.63	12.992	7.283	5.118	6.47
NF30150	FC450	16.929	1.339	2.16	16.929	1.339	2.16	16.929	9.055	5.315	11.31
NF30200	FC150	5.315	1.339	.40	5.315	1.339	.40	5.315	3.150	3.150	.70
NF30200	FC200	7.283	1.339	.57	7.283	1.339	.57	7.283	4.528	3.346	1.50
NF30200	FC270	9.843	1.339	.79	9.843	1.339	.79	9.843	5.512	4.134	2.46
NF30200	FC350	12.992	1.339	1.63	12.992	1.339	1.63	12.992	7.283	5.118	6.47
NF30200	FC450	16.929	1.339	2.16	16.929	1.339	2.16	16.929	9.055	5.315	11.31
NF56200	FC410	15.354	2.008	2.86	15.354	2.008	2.86	15.354	9.173	3.937	11.00
NF56200	FC450	16.929	2.008	3.17	16.929	2.008	3.17	16.929	9.055	5.315	11.44
NF56200	FC580	22.047	2.008	4.22	22.047	2.008	4.22	22.047	11.417	6.299	18.92
NF56250	FC410	15.354	2.008	2.86	15.354	2.008	2.86	15.354	9.173	3.937	11.00
NF56250	FC450	16.929	2.008	3.17	16.929	2.008	3.17	16.929	9.055	5.315	11.44
NF56250	FC580	22.047	2.008	4.22	22.047	2.008	4.22	22.047	11.417	6.299	18.92

To locate compatible sprockets for your chain, refer to the Product Cross-Reference in Section D.

Note: Dimensions are subject to change. Contact Union Chain to obtain certified prints for design and construction.