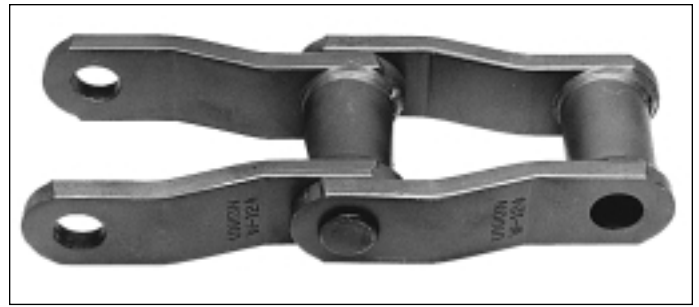
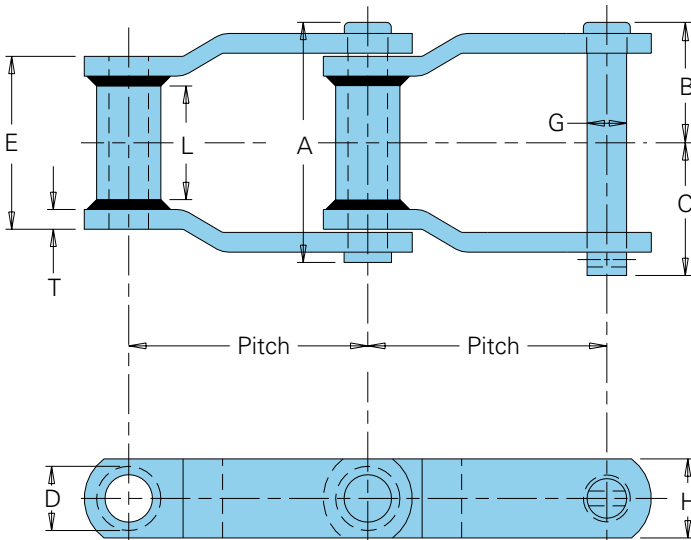


Welded Steel Mill Chain

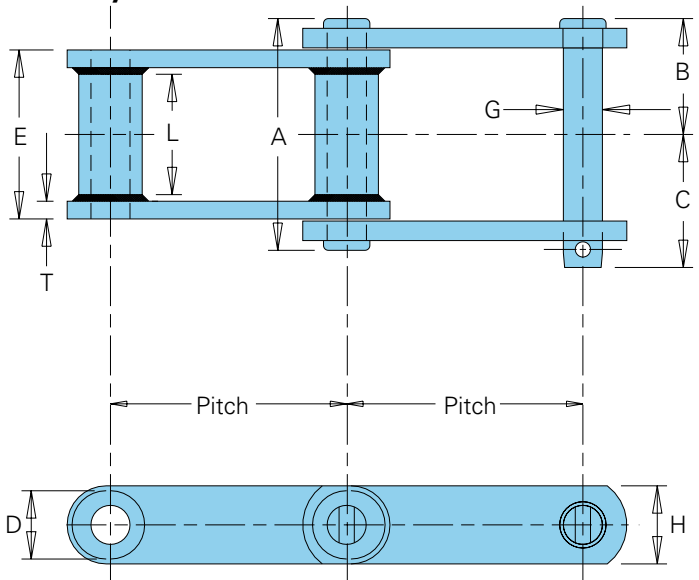
Union offers a line of Welded Steel Mill Chains for most conveying, driving and elevating applications where high strength rollerless chains are required. They are available with a full line of attachments which makes them easily adaptable to a wide variety of applications.



Offset Sidebar



WCH-Style Chain



Welded Steel Mill Chain Specifications

All dimensions are in inches unless otherwise indicated.

Chain No.	Pitch	Chain Width				Barrel		Pin Dia.	Sidebars		Average Ult. Strength (lbs.)	Maximum Work Load (lbs.)	Approx. Weight (lbs./ft.)
		Overall	Pin Head to CL	Pin End to CL	Lgth. of Bearing	D	L		Thick.	Height			
		A	B	C	E	D	L	G	T	H			
WH-78	2.609	3.00	1.44	1.56	2.00	.88	1.13	.50	.25	1.13	33,000	3,500	4.0
WH-82	3.075	3.25	1.56	1.69	2.25	1.06	1.25	.56	.25	1.25	36,000	4,400	4.8
WH-124 ¹	4.000	4.25	2.03	2.22	2.75	1.25	1.63	.75	.38	1.50	60,000	7,350	8.3
WH-124H	4.063	4.75	2.28	2.47	3.00	1.75	1.63	1.00	.50	2.00	100,000	10,500	14.7
WH-111	4.760	4.88	2.34	2.54	3.38	1.38	2.38	.75	.38	1.75	60,000	8,850	9.5
WH-106	6.000	4.25	2.03	2.31	2.75	1.25	1.63	.75	.38	1.50	60,000	7,200	7.0
WH-132 ¹	6.050	6.25	3.00	3.40	4.38	1.75	2.88	1.00	.50	2.00	100,000	15,300	14.2
WH-150	6.050	6.25	3.00	3.25	4.38	1.75	2.88	1.00	.50	2.50	100,000	15,300	16.8
WH-155	6.050	6.91	3.25	3.66	4.63	1.75	3.00	1.13	.63	2.50	184,000	20,000	20.0
WCH-132	6.050	6.25	3.00	3.25	4.38	1.75	2.88	1.00	.50	2.00	100,000	15,300	14.2

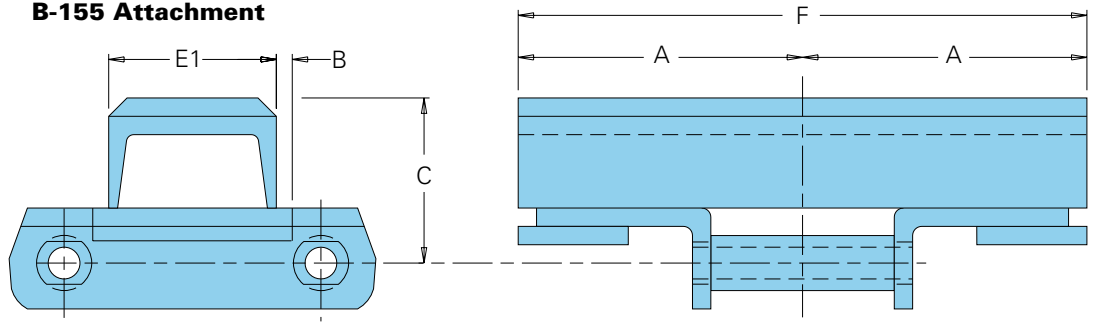
Indicates this chain is normally stocked. All others are made-to-order.

¹Chain numbers WH-124 and WH-132 are also stocked in stainless steel with riveted and cottered construction.

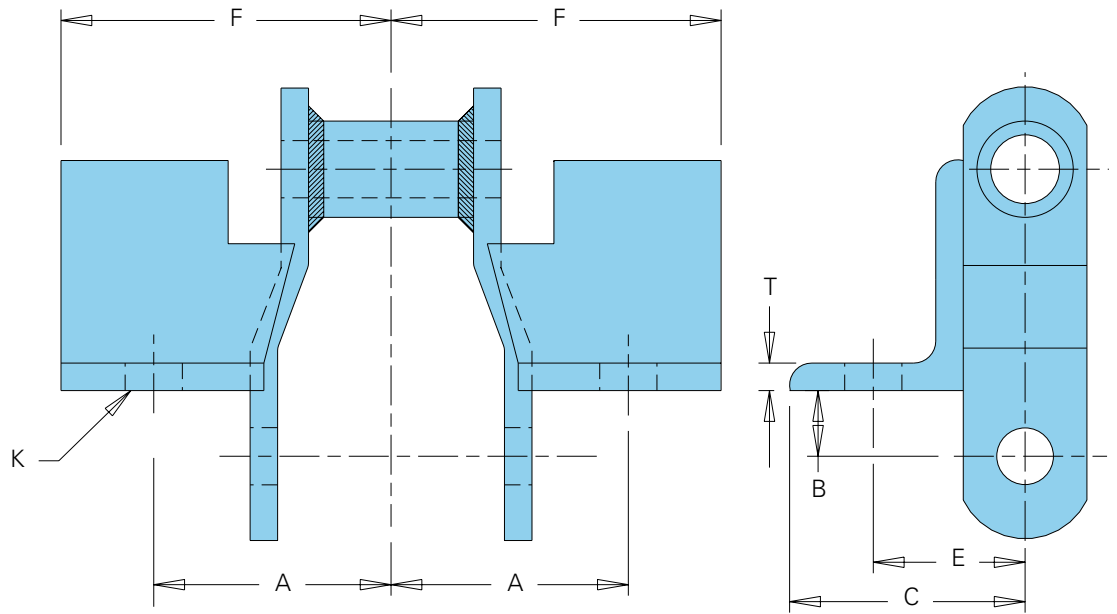
To locate compatible sprockets for your chain, refer to the Product Cross-Reference in Section D.

Note: Dimensions are subject to change. Contact Union Chain to obtain certified prints for design and construction.

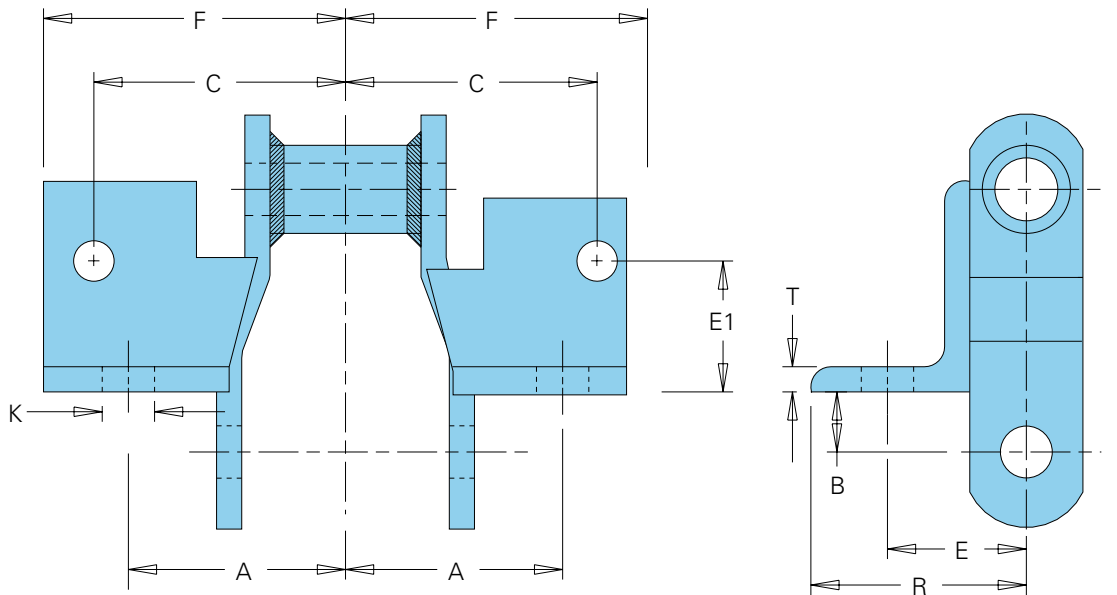
B-155 Attachment

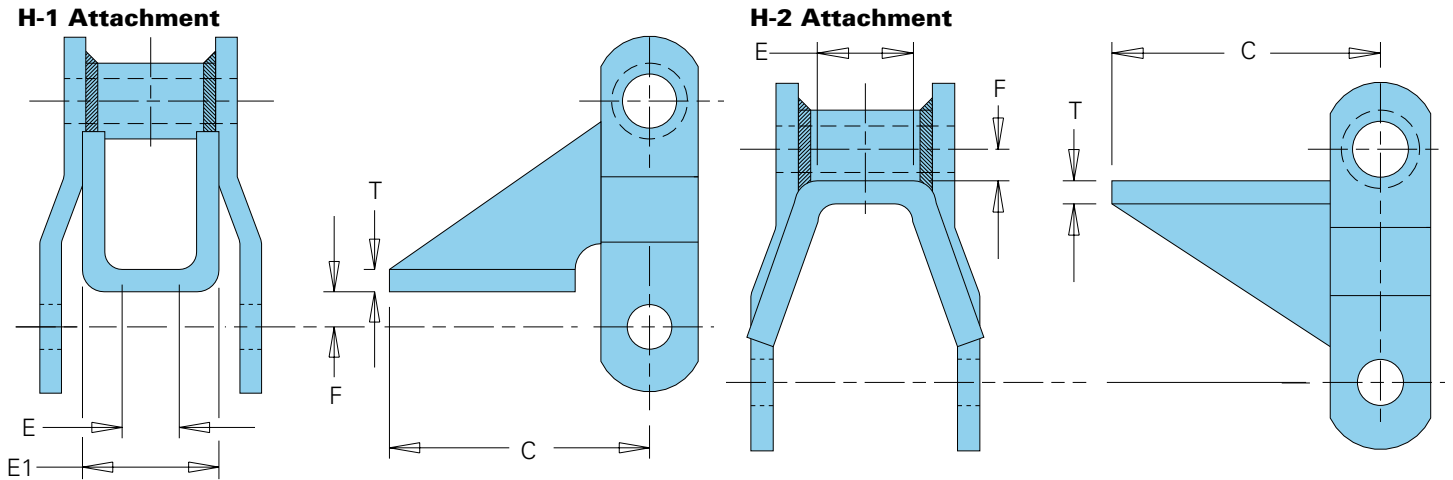


F-2 Attachment



F-4 Attachment





Welded Steel Mill Chain Attachments

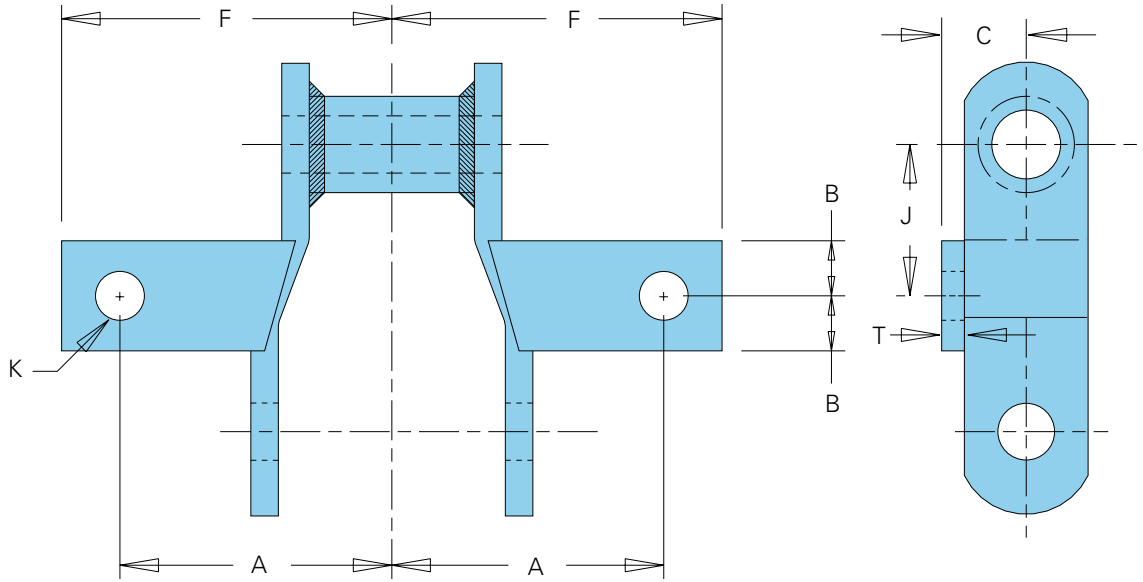
All dimensions are in inches unless otherwise indicated.

Attach. Number	Chain Number	A	B	C	E	E1	F	Bolt Diameter	K	T	R	Approx Weight (lbs./ft.)
B-155	WH-132	7.00	1.03	4.25		4.00	14.00					49.6
	WH-150	7.00	1.03	4.50		4.00	14.00					54.6
	WH-155	7.00	1.03	4.50		4.00	14.00					56.6
F-2	WH-78	1.88	.69	2.06	1.44		2.69	.38		.25		6.0
F-4	WH-78	1.88	.69	2.25	1.44	1.25	2.75	.38		.25	2.06	6.1
	WH-82	2.06	.75	2.50	1.50	1.13	2.97	.38		.25	2.38	8.9
	WH-124	2.19	.88	2.63	2.06	1.44	3.09	.38		.39	2.75	11.6
H-1	WH-78			3.56	.88	1.75	.50			.25		8.3
	WH-82			3.63	1.13	2.00	.63			.25		9.9
H-2	WH-78			3.56	.81		.31			.25		7.5
	WH-82			3.63	1.03		.38			.25		8.8

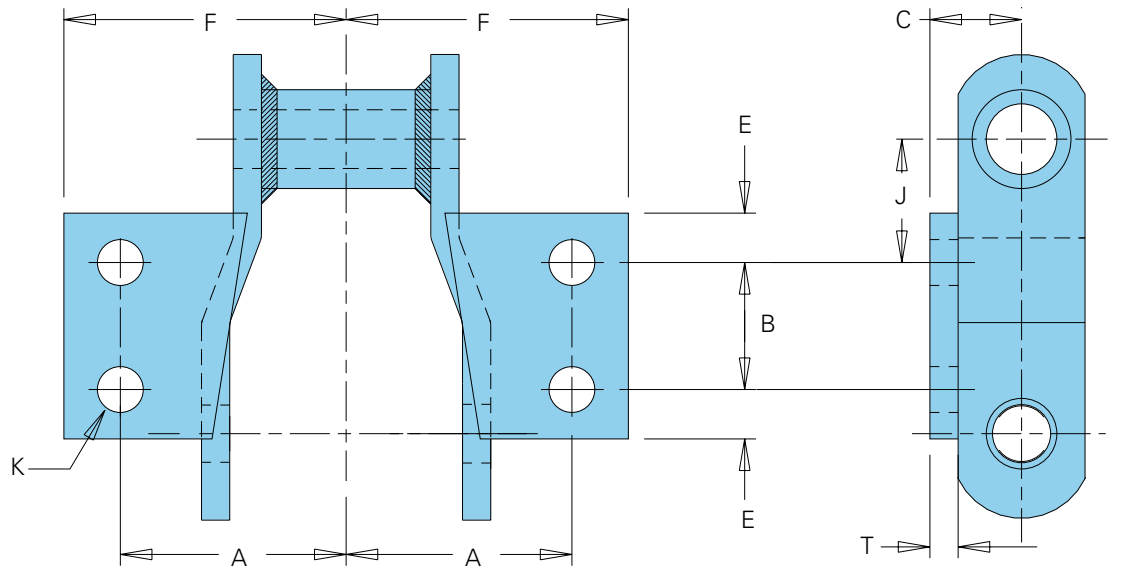
To locate compatible sprockets for your chain, refer to the Product Cross-Reference in Section D.

Note: Dimensions are subject to change. Contact Union Chain to obtain certified prints for design and construction.

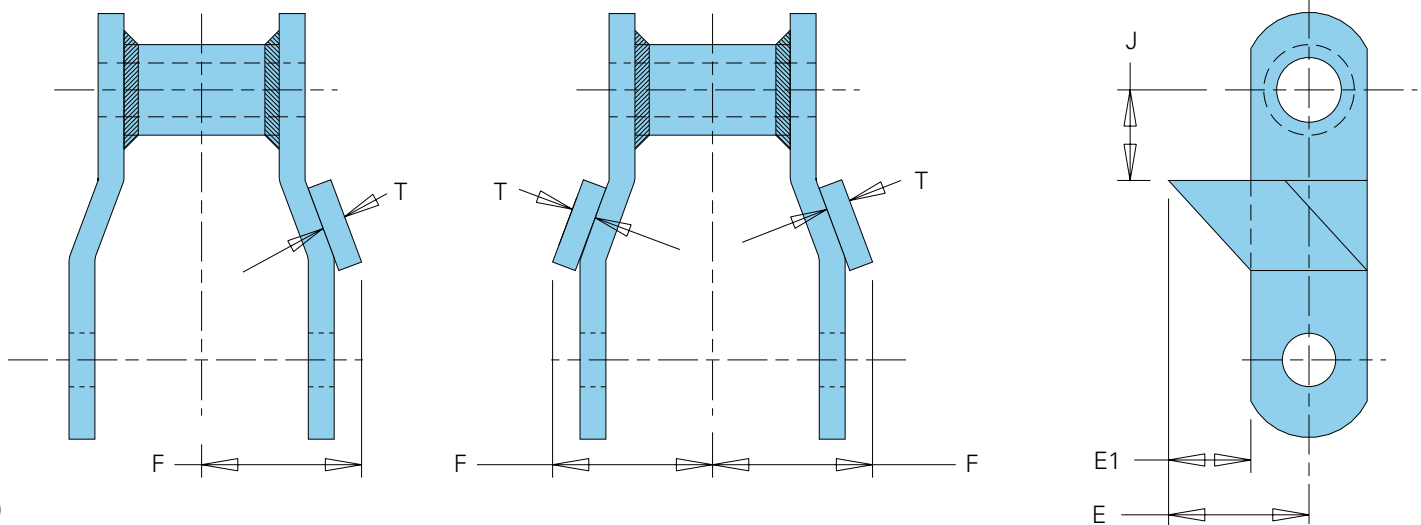
K-1 Attachment



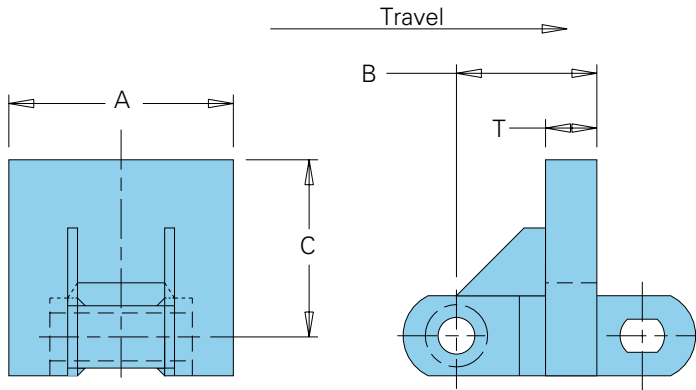
K-2 Attachment



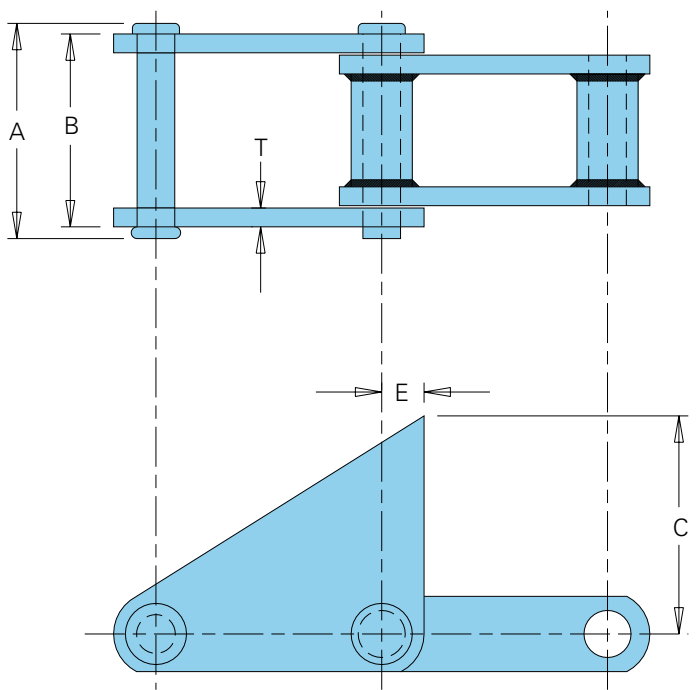
R-1, R-1-1/2, RR Attachment



RF-12 Attachment



S-1 Attachment



Welded Steel Mill Chain Attachments (Continued)

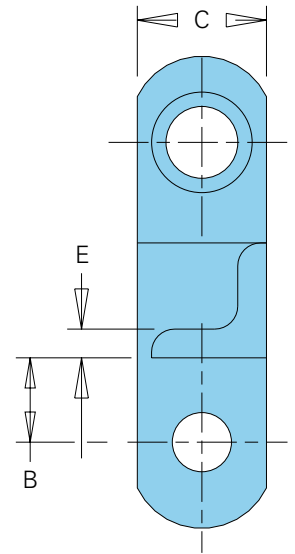
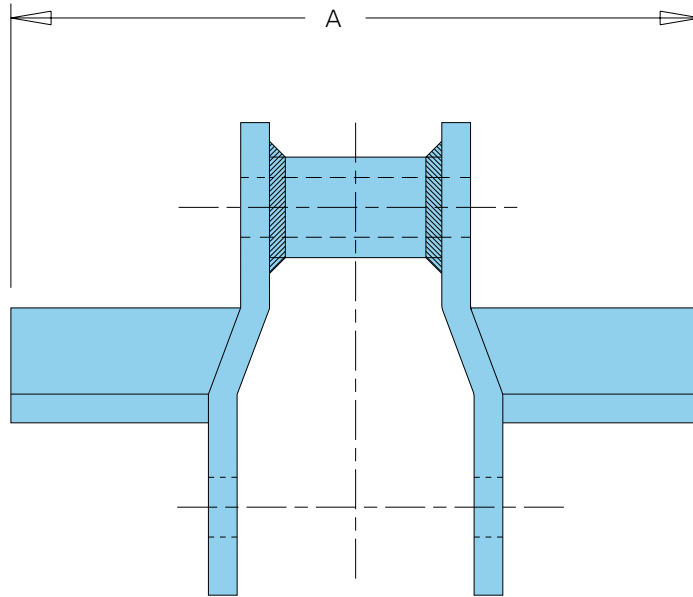
All dimensions are in inches unless otherwise indicated.

Attach. Number	Chain Number										Approx. Weight (lbs./ft.)
		A	B	C	E	E1	F	K	J	T	
K-1	WH-78	2.00	.63	.81			2.50	.38	1.38	.25	5.5
	WH-82	2.13	.88	.88			2.75	.38	1.56	.25	7.2
K-2	WH-78	2.00	1.13	.81	.43		2.50	.38	1.09	.25	6.3
	WH-82	2.13	1.31	.88	.47		2.75	.38		.25	7.6
	WH-124	2.63	1.94	1.13	.53		3.50	.38		.38	11.7
	WH-124H	2.63	1.94	1.50	.53		3.50	.50		.50	18.4
	WH-132	3.75	2.75	1.38	.63		4.38	.50	1.66	.50	18.0
	WCH-132	3.75	2.75	1.38	.63		4.38	.50	1.66	.50	18.0
WH-150	WH-150	3.75	2.75	1.63	.63		4.38	.50	1.66	.50	20.0
R-1	WH-78				1.56	1.00	1.56		.75	.25	4.7
	WH-82				1.88	1.25	1.69		.88	.25	6.1
	WH-124				1.88	1.13	2.16		1.28	.38	9.4
R-1-1/2	WH-78				2.06	1.50	1.56		.75	.25	4.9
RR	WH-78				1.56	1.00	3.13		.75	.25	5.2
	WH-82				1.88	1.25	3.38		.88	.25	6.7
	WH-124				1.88	1.13	4.25		1.25	.38	10.4
	WH-124H				2.13	1.13	4.88		1.25	.50	17.6
RF-12	WH-132	12.00	4.56	5.25						1.00	55.0
	WH-150	12.00	4.56	5.50						1.00	58.0
	WH-155	12.00	4.56	5.50						1.00	63.0
S-1	WCH-132	6.00	5.44	5.00	1.28					.50	18.1

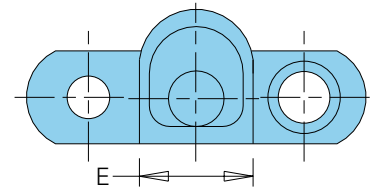
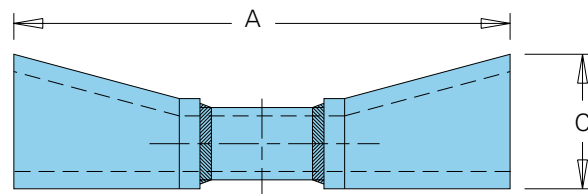
To locate compatible sprockets for your chain, refer to the Product Cross-Reference in Section D.

Note: Dimensions are subject to change. Contact Union Chain to obtain certified prints for design and construction.

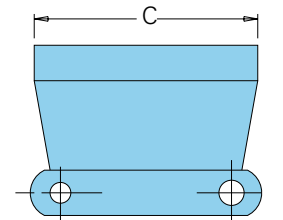
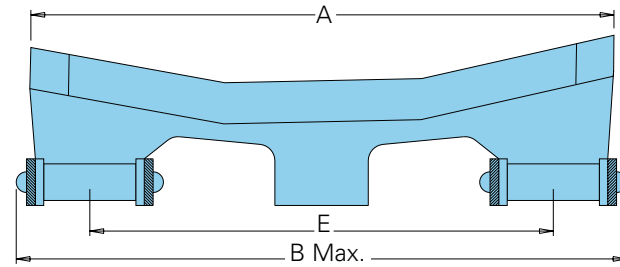
Wing



Log Cradle



Double Strand Log Cradle



Welded Steel Mill Chain Attachments (Continued)

All dimensions are in inches unless otherwise indicated.

Attachment Number	Chain Number	A	B	C	E	Approximate Weight (lbs./ft.)
Wing	WH-78	6.00	.75	1.00	.25	7.3
	WH-82	6.50	.81	1.25	.25	8.6
	WH-124	8.50	1.19	1.50	.25	14.2
	WH-132	12.38	1.44	2.00	.38	21.0
	WCH-132	12.38	1.44	2.00	.38	21.0
	WH-124H	8.50	1.38	2.00	.50	19.1
Log Cradle	WH-132	11.13		3.00	3.50	29.2
	WH-132	13.00		3.00	3.50	32.2
	WCH-132	11.13		3.00	3.50	29.2
	WCH-132	13.00		3.00	3.50	32.2
Double Strand Log Cradle	WH-132	16.00	17.50	6.00	12.00	96.0
	WCH-132	16.00	17.50	6.00	12.00	96.0

To locate compatible sprockets for your chain, refer to the Product Cross-Reference in Section D.

Note: Dimensions are subject to change. Contact Union Chain to obtain certified prints for design and construction.