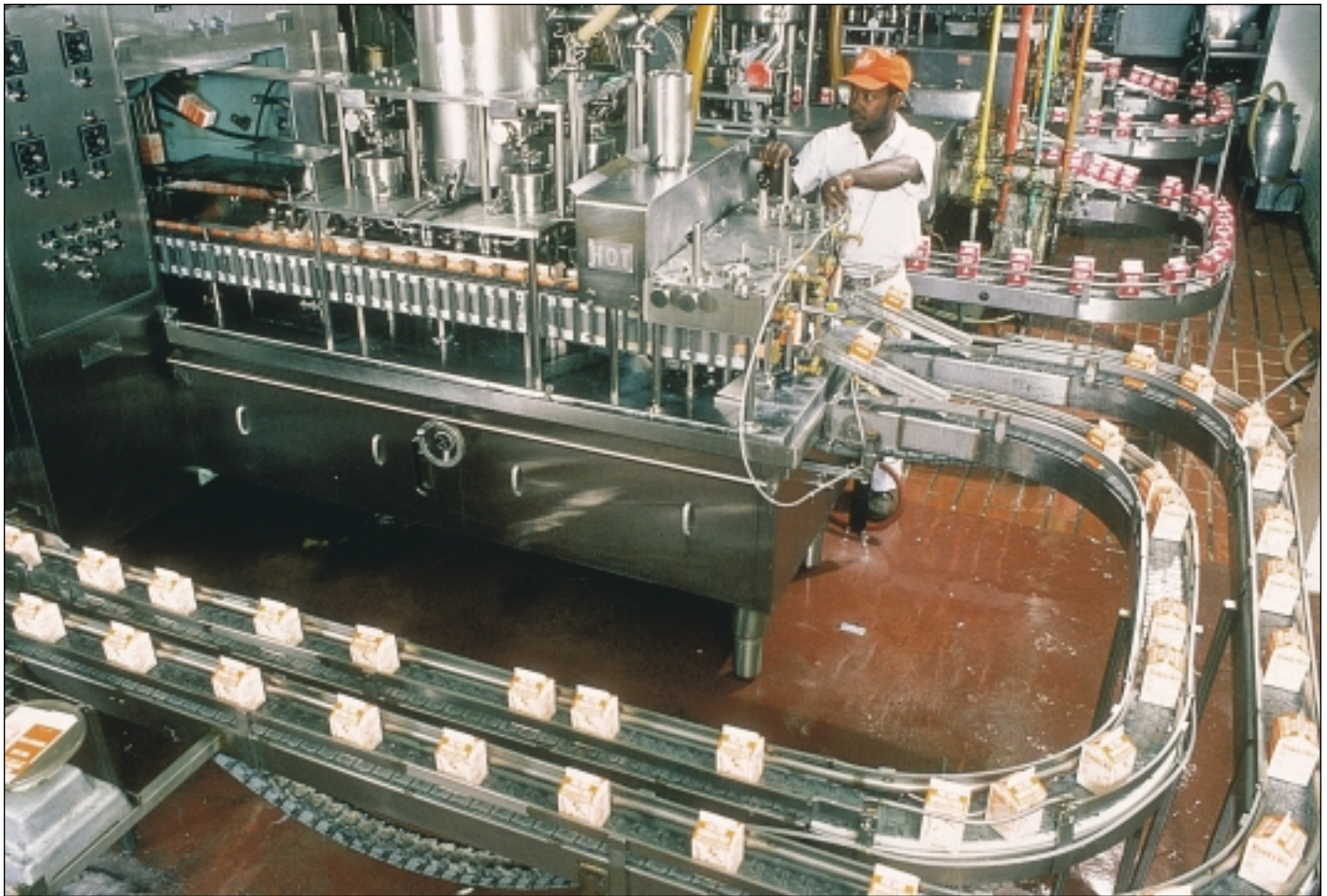




Dairy Handling

In-floor conveyor systems move the dairy industry. The Union Chain Division of U.S. Tsubaki, Inc., makes outstanding conveyor chains for this application. These conveyors are usually designed with two endless chains running parallel on 7" to 8" centerlines. Typical chain manufactured lengths are 40 to 50 feet; conveyor track lengths are usually about 100 feet.

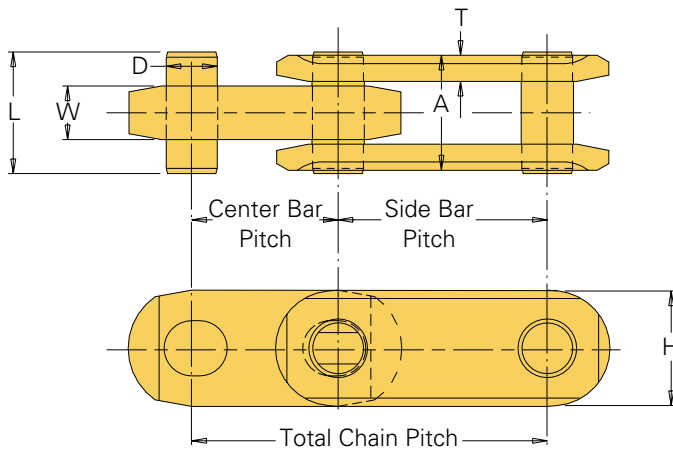


In-floor conveyors at dairy plants generally move case weights of up to 15,000 pounds; however, Union Dairy Handling Chains have an ultimate strength rating of up to 48,000 pounds per strand. The added strength means longer-lasting chain for your application—chain that can stand up to variable or shock loads and keep performing.

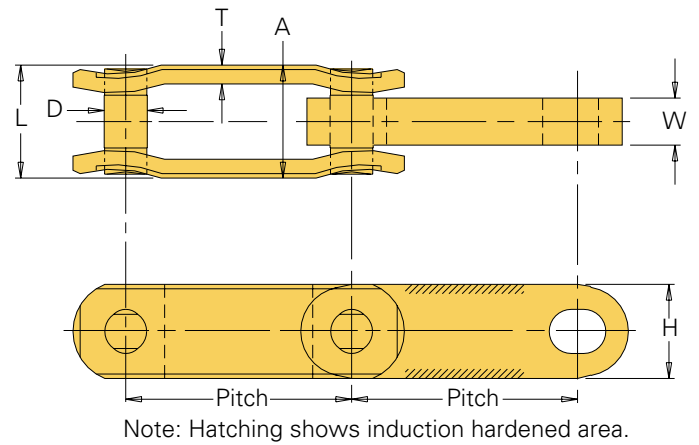
We have a variety of Dairy Handling Chains in stock; we've listed a few standard chains in the following chart. We can also manufacture a chain to your exact specifications. With Union you get the flexibility to make your business succeed.



DF-3498



DF-3500 and DF-3910



Dairy Case Conveyor Chain

All dimensions are in inches unless otherwise indicated.

Chain Number	Chain Width		Link Plate		Pin		Minimum Flex Radius	Average Tensile Strength (lbs.)	Maximum Allowable Work Load (lbs.)	Approx. Weight (lbs./ft.)	
	Pitch	Overall Width	Width of Inner Link								
		A	W	T	H	D	L				
DF-3498	1.750 2.500	1.45	.64	.31	1.40	.63	1.45	18.00	50,000	4,000	3.9
DF-3500	2.500 3.000	1.50	.63	.25	1.25	.57	1.46	20.00	48,000	4,000	3.3
DF-3910	3.000 3.000	1.50	.63	.25	1.25	.57	1.46	22.00	48,000	4,000	3.3

Indicates this chain is normally stocked. All others are made-to-order.

Note: For additional chain application information, refer to Section A (Engineering Class Chains) Double Flex Bar and Pin Chains.

THE UNION SOLUTION

- **Very high ultimate strength ratings**
- **Reliable in-plant service**
- **Quality construction**
- **Long-lasting**
- **In-stock or made-to-order flexibility**

To locate compatible sprockets for your chain, refer to the Product Cross-Reference in Section D.

Note: Dimensions are subject to change. Contact Union Chain to obtain certified prints for design and construction.