



# High-Temperature Industrial Ovens

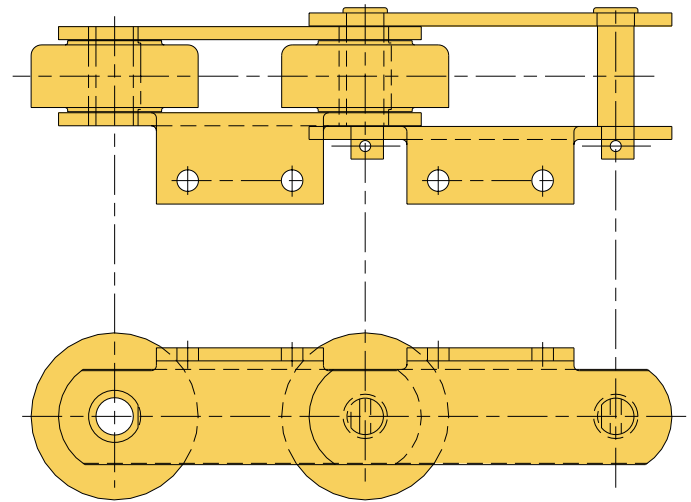
Product frequently has to be transported through a high-temperature atmosphere for curing or tempering. The moving element that accomplishes this task with the best economy is chain. Union Roller Conveyor Chains and Bar and Pin Chains are used extensively in this application. Pay special attention to the material properties and bearing pressures to select the right chain for your application. If you have any questions, contact Union Engineering. The Union Chain Division of U.S. Tsubaki Inc., can provide chains for high-temperature ovens that outlast the original equipment.



## Forming Chains

Forming Chains are usually Roller Conveyor Chains in tandem, top and bottom, which transfer a continuous line of product. The two conveyors sandwich formed product between them, holding it in place and moving it through a curing oven. Product thickness is accommodated by elevation set points on the top conveyor, which can be positioned up or down. Forming Chains are usually furnished with A-2 attachments with special attention to maintaining uniform attachment height.

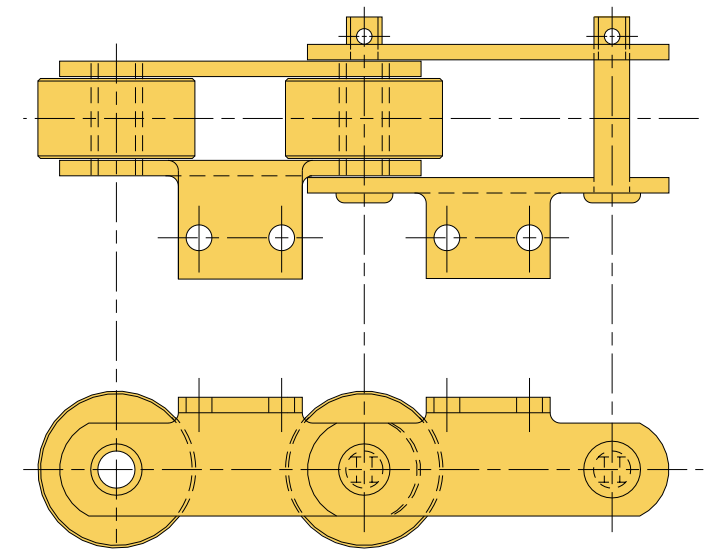
### Typical Forming Chain



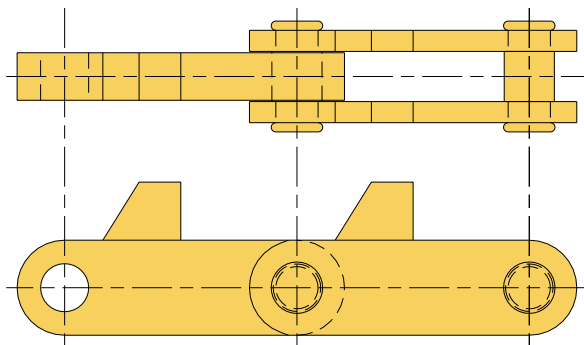
## Metal Process Oven Chains

Materials frequently need to be tempered or annealed in high-temperature ovens. We offer a variety of chains that operate in these conditions—from Bar and Pin to Roller Conveyor with attachments. Chain materials are usually chosen based on the operating conditions, including the maximum temperature and the loads. Stainless Steel Conveyor Chains, for example, provide long service life and heat resistance. Consult Union Engineering to discuss your operation. We'll help you select the right chain for your application.

### Roller Conveyor Style



### Bar and Pin Style



## Make In-Line Inspections Easy

Put machinery access at your fingertips. ONE-TOUCH INSPECTION DOOR® is a dust- and rain-tight inspection and service door for conveyors, as well as processing and handling equipment. These pre-fabricated units are in-stock and ready-to-go for easy installation at the job site. Once in place, ONE-TOUCH INSPECTION DOOR allows for quick and simple inspection without the need for special tools: just lift the lever! No bolts to loosen and no covers to misplace. One touch is all it takes...it's that simple. For more information, see the ONE-TOUCH INSPECTION DOOR description in Section C.

### THE UNION SOLUTION

- **Strong, long-lasting chain**
- **Withstands high shock loads**
- **Holds product on-line**
- **Range of attachments**
- **Low bearing pressures**