

# Mining

The Union Chain Division of U.S. Tsubaki, Inc., is the leading manufacturer of mining chains that are used in underground, above ground, and preparation plant applications.

We currently manufacture many different sizes of mine chains for several major OEMs. This relationship enables us to design upgrades for the chain in the mining equipment to meet the ever-changing needs of the industry.

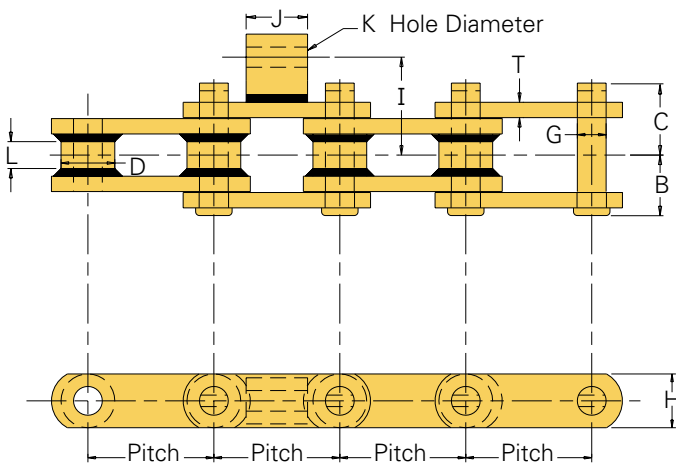
We use alloy-grade steels, heat-treated to precise specifications and assembled with the heavy press-fits required to withstand the punishment of today's more powerful, high production mining equipment.

Our complete line of mining chains includes: Shuttle Car Chain, Feeder Breaker Chain, Tram Drive Chain, Wash Box Chain, Drop Forged Rivetless Chain, and Jig Washer Chain.

To better service your industry, nearly all of the mining chains are in-stock and ready for immediate shipment. We also manufacture made-to-order chains and attachment configurations for your individual requirements.



**Super Shuttle 4**



**Super Shuttle 4—Shuttle Car Chain Specifications**

All dimensions are in inches unless otherwise indicated.

Chain No.	Dwg. No.	Pitch	Style	Chain Width			Chain Dimensions									Attachments			Approx. Wgt. (lbs./ft.)
				Overall	Head to CL	End to CL	Pins		Bushings			Sidebars			Space	I	J	K	
							Dia.	Matl. <sup>1</sup>	Dia.	Matl. <sup>1</sup>	Thick.	Height	Matl. <sup>1</sup>						
(B+C)	B	C	G	D	L	T	H		I	J	K								
41001	21752	4.100	S <sup>2</sup>	4.31	1.97	2.34	.94	AHT	1.75	.88	AHT	.50	1.75	CHT	Ev.6th	3.00	2.00	.67	12.5

Indicates this chain is normally stocked.

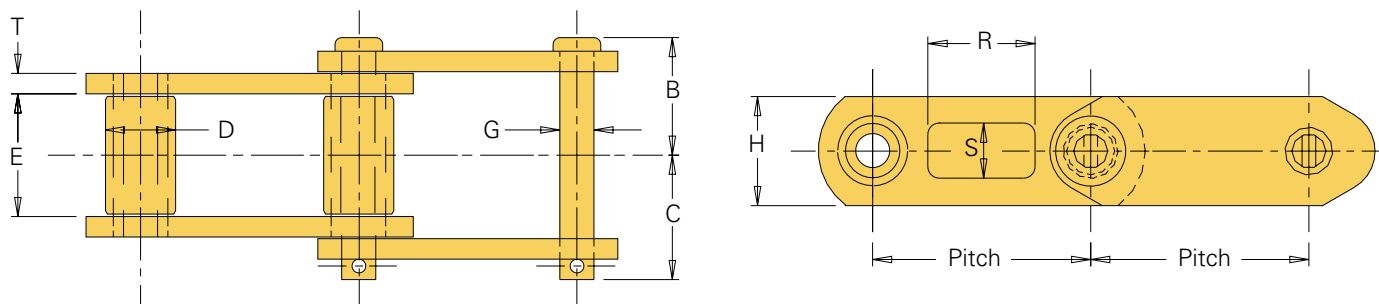
<sup>1</sup>Material: AHT = Alloy heat-treated; CHT = Carbon heat-treated.

<sup>2</sup>Indicates straight sidebar style.

To locate compatible sprockets for your chain, refer to the Product Cross-Reference in Section D.

Note: Dimensions are subject to change. Contact Union Chain to obtain certified prints for design and construction.


## Standard Shuttle Car Chain



## Standard Shuttle Car Chains Specifications

All dimensions are in inches unless otherwise indicated.

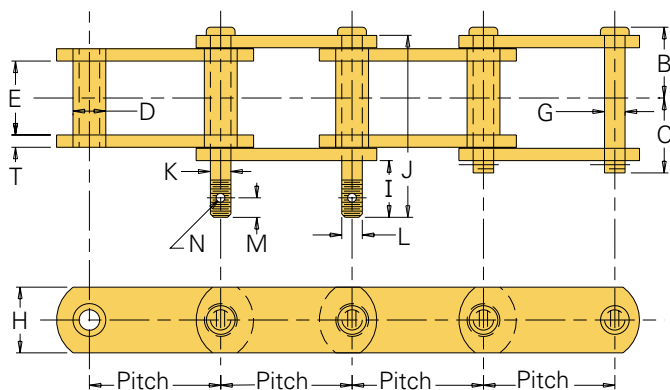
Chain No. <sup>1</sup>	Dwg. No.	Pitch	Space	Chain Width				Pins		Rollers		Sidebars			Attachments		Approx. Weight (lbs./ft.)
				Overall	Head to CL	End to CL	Inside Width	Dia.	Matl. <sup>2</sup>	Dia.	Matl. <sup>2</sup>	Thick.	Height	Matl. <sup>2</sup>	R	S	
				(B+C)	B	C	E	G		D		T	H				
26001	17108	2.609	Ev. 6th	2.91	1.36	1.55	1.13	.56	AHT	1.13	ACH	.31	1.63	AHT	1.28	.66	6.3
26001	22304	2.609	Ev. 8th	2.91	1.36	1.55	1.13	.56	AHT	1.13	ACH	.31	1.63	AHT	1.28	.66	6.3
30701	22376	3.075	Ev. 6th	3.56	1.89	1.67	1.50	.63	AHT	1.25	ACH	.38	1.75	CHT	1.28	.66	8.8

 Indicates this chain is normally stocked. All others are made-to-order.

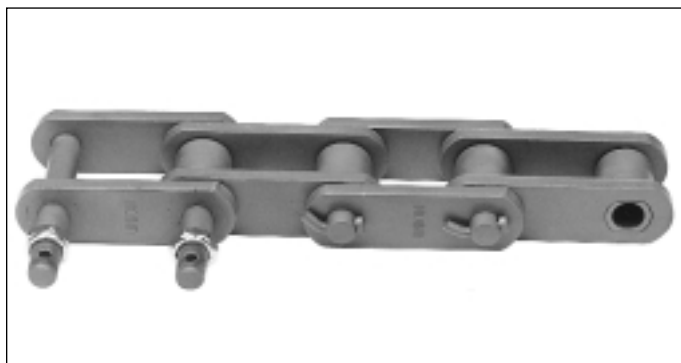
<sup>1</sup>Chain number 26001 has the slotted attachment hole on the cottered side only and Chain number 30701 has slotted attachment holes on both sides.

<sup>2</sup>Material: AHT = Alloy heat-treated; CHT = Carbon heat-treated.

## Feeder Breaker Chain




## Chain Number 30703



## Feeder Breaker Chain Specifications

All dimensions are in inches unless otherwise indicated.

Chain No.	Dwg. No.	Pitch	Chain Width				Pins		Bushings		Sidebars			Attachments					Approx. Weight (lbs./ft.)	
			Over-all	Head to CL	End to CL	Inside Width	Dia.	Matl. <sup>1</sup>	Dia.	Matl. <sup>1</sup>	Thick.	Height	Matl. <sup>1</sup>	I	J	K	L	M		N
			(B+C)	B	C	E	G	D		T	H									
30703	19501	3.075	3.44	1.63	1.81	1.31	.68	AHT	1.25	CCH	.38	1.50	CHT	2.06	4.94	.67	.63	.50	.25	4.6

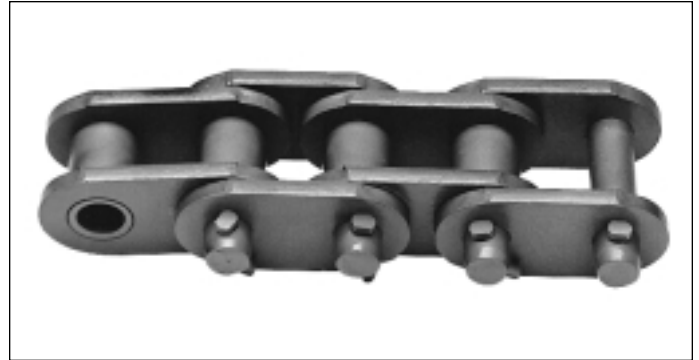
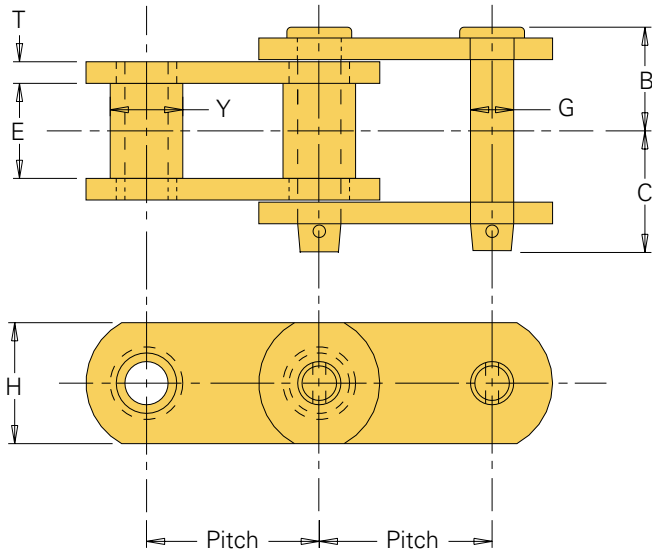
 Indicates this chain is normally stocked. All others are made-to-order.

<sup>1</sup>Material: CHT = Carbon heat-treated; ACH = Alloy case hardened; AHT = Alloy heat-treated.

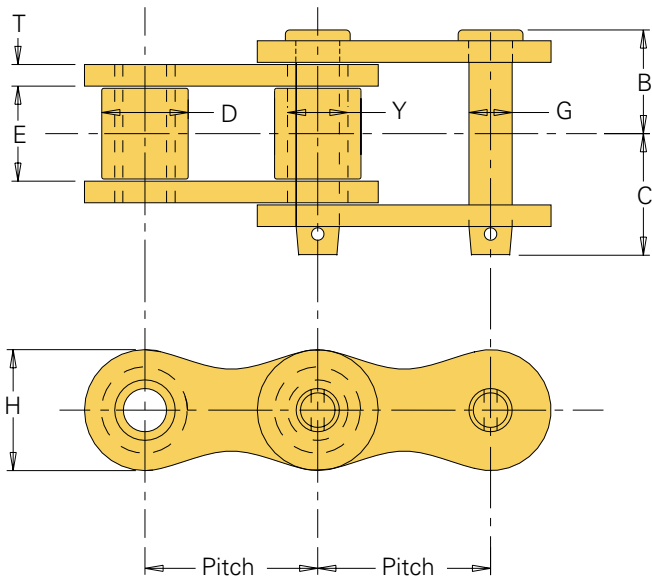
To locate compatible sprockets for your chain, refer to the Product Cross-Reference in Section D.

Note: Dimensions are subject to change. Contact Union Chain to obtain certified prints for design and construction.

**Style A**



**Style B**



**Tram Chains Specifications**

All dimensions are in inches unless otherwise indicated.

Chain Number	Pitch	Style	Chain Width				Pins		Bushings		Rollers		Sidebars			Approx. Weight (lbs./ft.)
			Overall	Head to CL	End to CL	Inside Width	Dia.	Matl. <sup>1</sup>	Dia.	Matl. <sup>1</sup>	Dia.	Matl. <sup>1</sup>	Thick. <sup>2</sup>	Height	Matl. <sup>1</sup>	
			(B+C)	B	C	E	G		Y		D		T	H		
US-2 <sup>3</sup>	2.000	A	3.38	1.44	1.72	1.25	0.72	AHT	1.13	ACH	—	—	0.31	1.88	AHT	8.3
US-64S	2.500	B	3.72	1.69	2.00	1.50	0.88	AHT	1.13	ACH	1.56	AHT	0.38	2.13	AHT	13.5
US-64SH	2.500	B	4.13	1.91	2.22	1.50	0.88	AHT	1.13	ACH	1.56	AHT	.44x.50	2.13	AHT	14.5

Indicates this chain is normally stocked. All others are made-to-order.

<sup>1</sup>Material: AHT = Alloy heat-treated; ACH = Alloy case hardened.

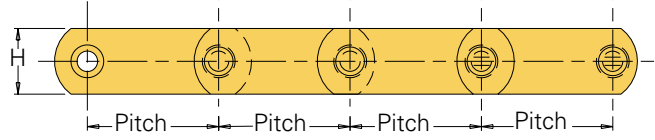
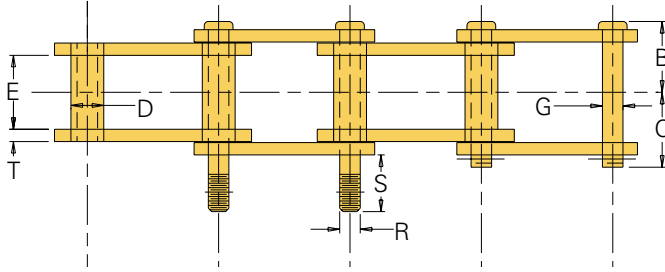
<sup>2</sup>US-64SH sidebar thickness on roller links is .50" and pin link .44".

<sup>3</sup>US-2 is a bushing type chain and does not have rollers.

To locate compatible sprockets for your chain, refer to the Product Cross-Reference in Section D.

Note: Dimensions are subject to change. Contact Union Chain to obtain certified prints for design and construction.

## Wash Box Chain



## Wash Box Chains Specifications

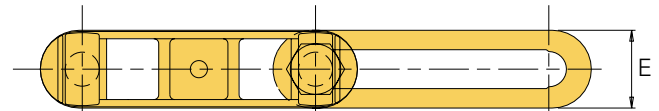
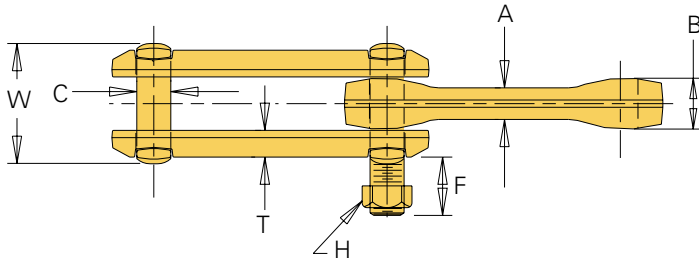
All dimensions are in inches unless otherwise indicated.

Chain No.	Dwg. No.	Pitch	Space	Chain Width				Pins		Bushings		Sidebars			Attachments		Approx. Weight (lbs./ft.)
				Overall	Head to CL	End to CL	Inside Width	Dia.	Matl. <sup>1</sup>	Dia.	Matl. <sup>1</sup>	Thick.	Height	Matl. <sup>1</sup>	R	S	
				(B+C)	B	C	E	G	D	T	H						
30702	16290	3.075	Ev. 4th	1.69	2.00	2.00	1.31	.75	ACHCP	1.25	CCH	.38	1.75	CHT	.75	1.25	10.2
30702	14143	3.075	Ev. 6th	1.69	2.00	2.00	1.31	.75	ACHCP	1.25	CCH	.38	1.75	CHT	.75	1.25	9.8

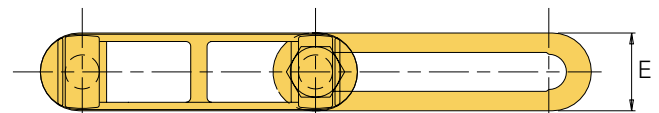
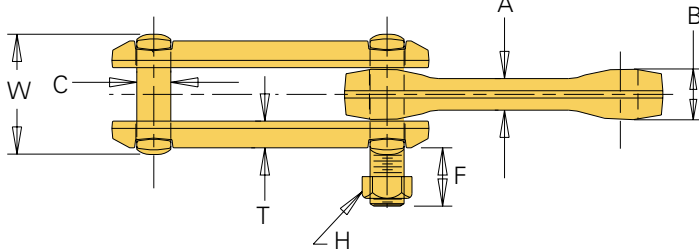
Indicates this chain is normally stocked. All others are made-to-order.

<sup>1</sup>Material: ACHCP = Alloy case hardened chrome plated; CCH = Carbon case hardened; CHT = Carbon heat-treated.

## X-Style Drop Forged Rivetless Chain with Extended Pins



## Standard Drop Forged Rivetless Chain



## Drop Forged Rivetless Chain Specifications

All dimensions are in inches unless otherwise indicated.

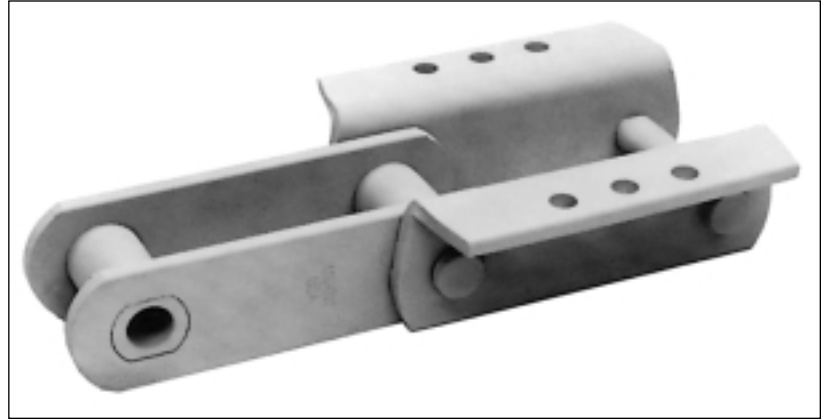
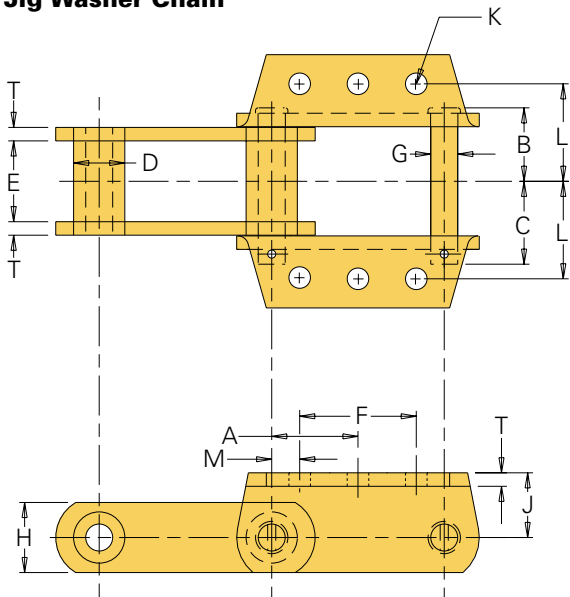
Chain Number	Drawing Number	Pitch	Average Tensile Strength	A	B	C	E	T	W	Attachments			Approx. Weight (lbs./ft.)
										Space	F	H	
X-678	18371	6.031	85,000	.81	1.31	.88	2.00	.50	3.09	2 Ext. Pins Ev. 4th	1.50	.75	6.9
698	21652	6.031	130,000	1.00	1.56	1.13	2.52	.63	3.75	2 Ext. Pins Ev. 4th	1.50	.75	12.1

Indicates this chain is normally stocked. All others are made-to-order.

To locate compatible sprockets for your chain, refer to the Product Cross-Reference in Section D.

Note: Dimensions are subject to change. Contact Union Chain to obtain certified prints for design and construction.

### Jig Washer Chain



### 6826 Jig Washer Chains

All dimensions are in inches unless otherwise indicated.

Chain Number	Dwg. No.	Pitch	Chain Width				Inside Width	Pins		Bushings		Sidebars			Attachments					Approx. Weight (lbs./ft.)	
			Over-all	Head to CL	End to CL			Dia.	Matl. <sup>1</sup>	Dia.	Matl. <sup>1</sup>	Thick.	Height	Matl. <sup>1</sup>	A	F	J	M	L		K
			(B+C)	B	C	E	G			D		T	H		A	F	J	M	L	K	
6826 K1/K2 Ev. 2nd	19583	6.000	4.75	2.22	2.53	2.38	.88	AHTIH	1.50	ACH	.38	2.50x3	CHT	3.00	2.63	1.75	1.69	3.00	.53	15.5	
6826 K1/K2 Ev. 3rd	19442	6.000	4.75	2.22	2.53	2.38	.88	AHTIH	1.50	ACH	.38	2.50x3	CHT	3.00	2.63	1.75	1.69	3.00	.53	14.0	
6826 K1/K2 Ev. 4th	19448	6.000	4.75	2.22	2.53	2.38	.88	AHTIH	1.50	ACH	.38	2.50x3	CHT	3.00	2.63	1.75	1.69	3.00	.53	13.0	

<sup>1</sup>Material: AHTIH = Alloy heat-treated induction hardened; ACH = Alloy case hardened; CHT = Carbon heat-treated.

### Make In-Line Inspections Easy

Put machinery access at your fingertips. ONE-TOUCH INSPECTION DOOR® is a dust- and rain-tight inspection and service door for conveyors, as well as processing and handling equipment. These pre-fabricated units are in-stock and ready-to-go for easy installation at the job site. Once in place, ONE-TOUCH INSPECTION DOOR allows for quick and simple inspection without the need for special tools: just lift the lever! No bolts to loosen and no covers to misplace. One touch is all it takes...it's that simple. For more information, see the ONE-TOUCH INSPECTION DOOR description in Section C.

To locate compatible sprockets for your chain, refer to the Product Cross-Reference in Section D.

Note: Dimensions are subject to change. Contact Union Chain to obtain certified prints for design and construction.

ONE-TOUCH INSPECTION DOOR® is a registered trademark of Tsubaki Conveyor of America, Inc.

### THE UNION SOLUTION

- Long wear-life
- Durability
- In-stock and made-to-order chains
- Reliability
- Alloy steel, when required
- Precision manufacturing