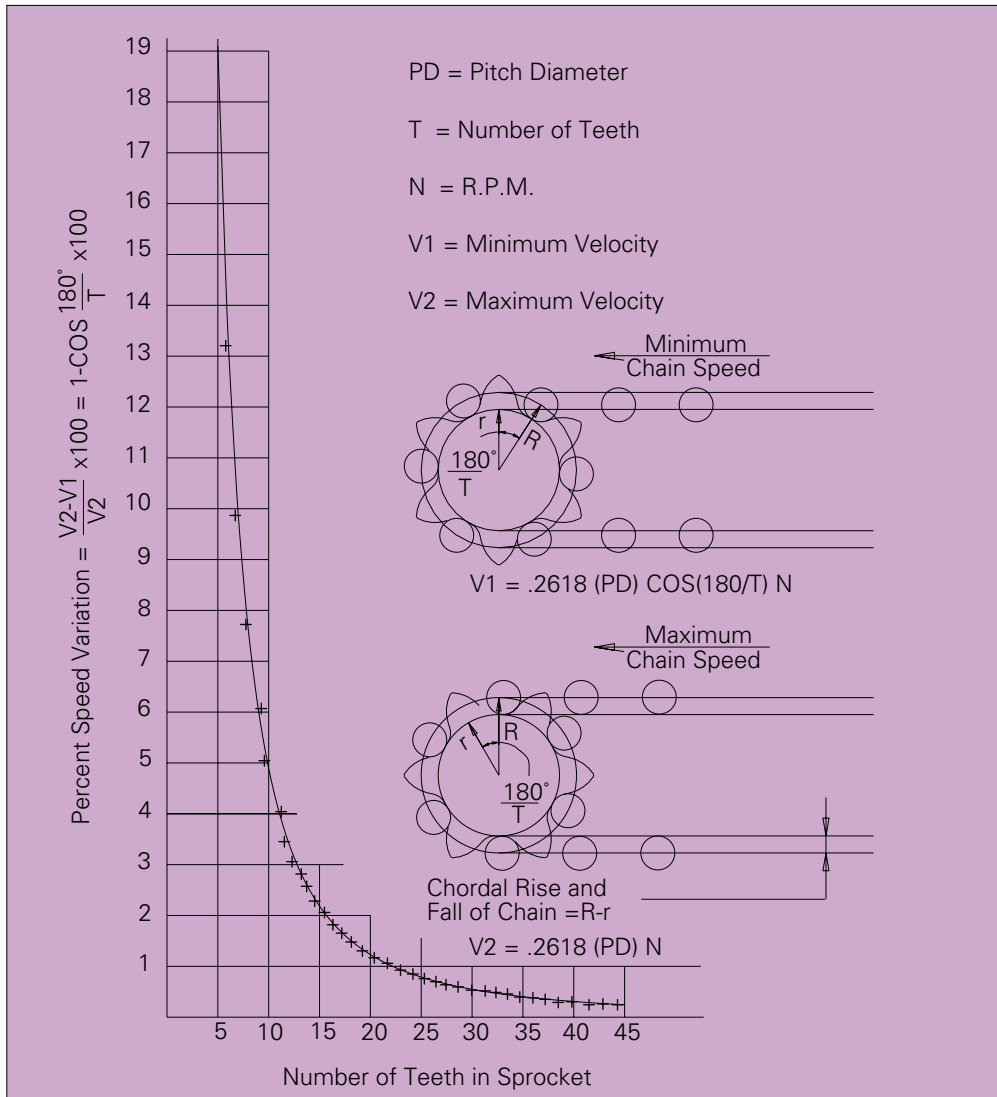


Figure 3 — Variations in Chain Speed Due to Chordal Action



Sprocket Life

When sprockets are worn, the chain tends to cling to the sprockets or vibrate. The amount of allowable wear depends on the conveyor type and chain size. Wear to a depth of 0.12" (3 mm) to 0.24" (6 mm) is usually a sign that the existing sprocket should be replaced, illustrated in Figure 4.

If the sprocket teeth are worn, the alignment may be incorrect. Proper axial alignment of the sprockets will help reduce or even eliminate wear of sprocket teeth, illustrated in Figure 5.

Figure 4 — Sprocket Wear

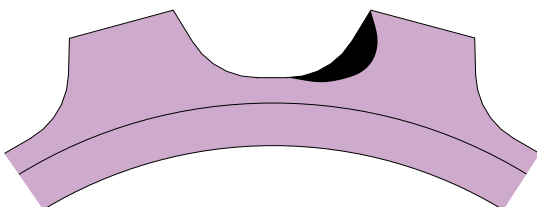


Figure 5 — Sprocket Tooth Wear

