

ATC Chain

ATC (Automatic Tool Changers) chain is widely employed in Machining Centers because of its economy, efficiency and functional versatility.

Advantages of ATC Chain

1. A high degree of layout freedom

The high degree of layout freedom possible with chain type ATC allows for efficient use of space.

2. Space saving

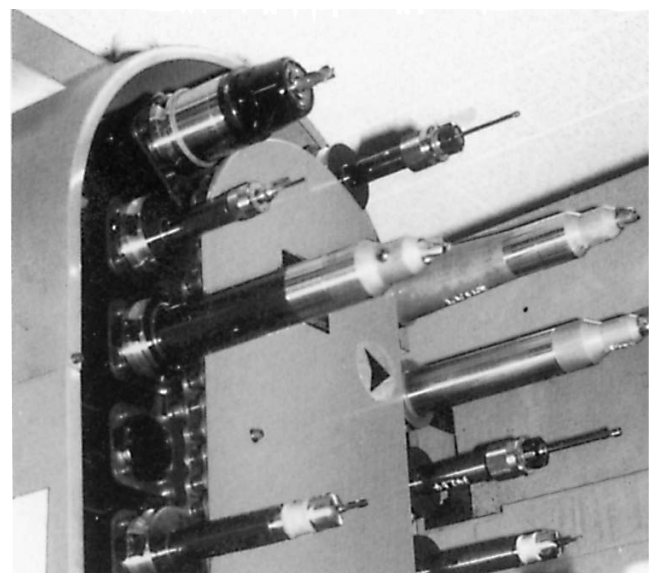
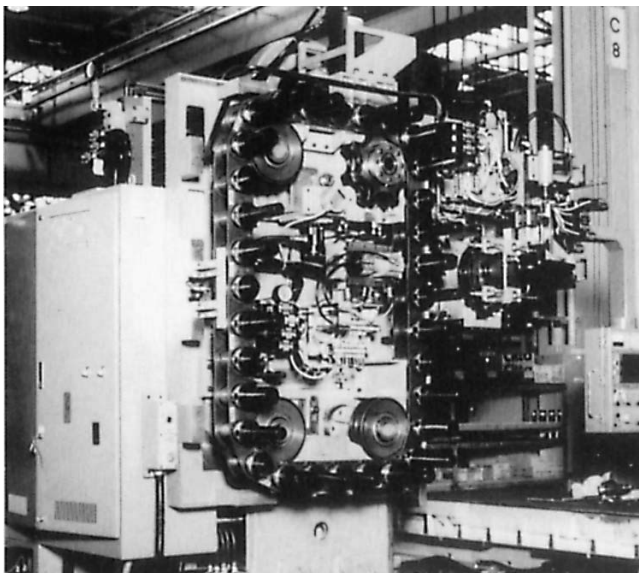
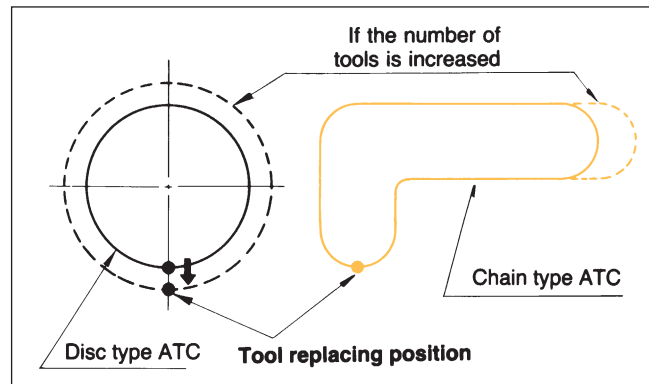
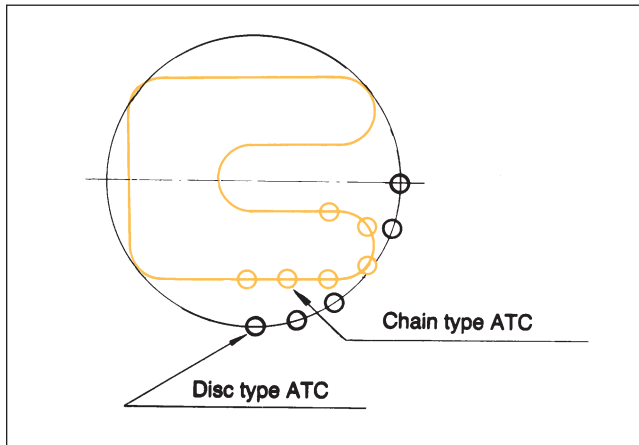
Chain type ATC can handle up to 50% more tools than disc types in the same space.

3. Economical and efficient

As more tools can be contained in the chain type than in the disc type, chain type ATC can be made lighter and has higher performance.

4. Easy standardization of design

Simply by lengthening the chain, the number of tools can be increased, but unlike the disc type, this does not change the tool replacing position. This versatility lets you standardize on chain.



HP-T type

The HP-T series is the hollow pin type chain complete with tool holder. Since the chain can bend backward, freedom of layout is exceptional, and a large number of tools can be held in a small space. Tools are held on the pitch line of the chain providing extra stability.

Hollow pin type chain is also available upon request, and can be supplied with plastic pots.

HP-T and HP type

HP-T



SK type

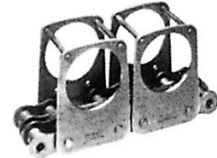
The stay pin series (SK02, SK04) resists lateral loads on the chain, and the side roller series (SK03, SK04) prevents tools from tilting and facilitates their positioning.

The chain can be supplied fitted with plastic pots.

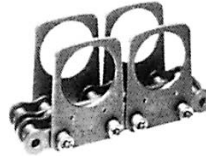
SK01 (Standard)



SK02 (with stay pin)



SK03 (with side roller)



SK04 (with stay pin and side roller)



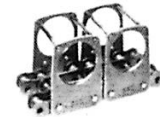
SK-W type

The SK-W series is a wider version of the SK type, and is suitable for long and heavy tools. The chain can be supplied with plastic pots.

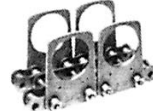
SK1W-SK4W (wide type)



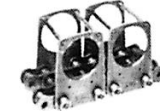
SK1W



SK2W



SK3W



SK4W

Availability

Chain type	Tool pitch								
	3	3.543	3.75	3.937	4.5	5	5.118	5.25	5.512
HP-T		○		○			○		○
SK type	SK01			○	○				○
	SK02			○	○				○
	SK03			○	○				○
	SK04			○	○				○
SK-W type	SK1W				○				○
	SK2W	○			○	○			○
	SK3W				○				○
	SK4W	○			○	○			○
HP		○		○			○		○
Taper Shank No.	40			50					

○ : Available

Note: Shank No. 45 and 60 are also available upon request. Consult U.S. Tsubaki.