

# U.S. TSUBAKI ATTACHMENT CHAIN FOR SPECIALTY APPLICATIONS

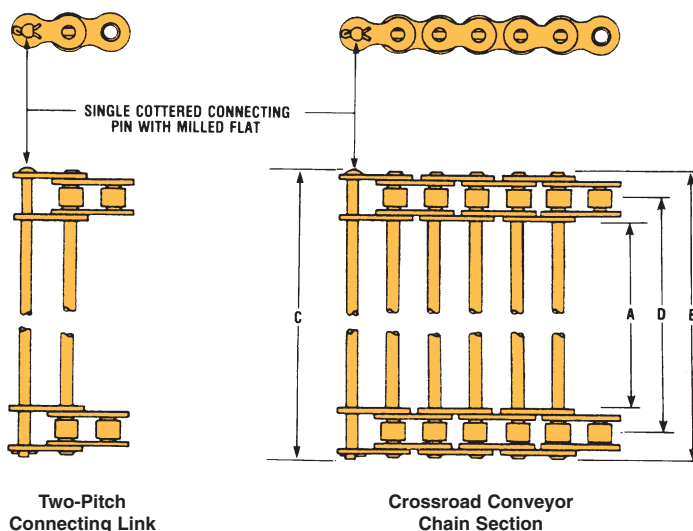
## Crossrod Conveyor Chain



Crossrod conveyor chain consists of two parallel strands of standard RS40 or RS50 chains, joined by crossrods on every link. RS40 chain is used for light loads such as conveying bread through coolers, wrappers and slicers. RS50 chain is for heavier loads. When sanitary, noncorrosive qualities are required, crossrods can be stainless steel.

The connecting pins have milled flats and fit into a D-shaped hole in the link plate to prevent pin rotation and give longer life. Chains are furnished in five-foot sections and run on standard ANSI sprockets. Removable two-pitch link sections are available for repair.

**Ordering Information.** Chains are available in carbon steel and stainless steel. Crossrods may be ordered in spring steel or stainless steel. One connecting pin is supplied with each chain section for connection. Additional pins may be ordered separately. Specify chain number and material combination desired. All sprockets should be ordered in pairs with keyways in line to evenly distribute loads to both chains.



### RS 40 Chain with .500 Pitch, .156" Pin Diameter

Dimensions in inches

U.S. TSUBAKI Chain Number	Nominal Width	Plate to Plate		From Pin Head to End C	Roller C.L. to C.L. D	Average Weight lbs./ft.
		Width A	Overall Riveted B			
P329-12	12	11.25	12.44	12.51	11.812	2.0
P329-15	15	14.25	15.44	15.51	14.812	2.6
P329-18	18	17.25	18.44	18.51	17.812	3.1
P329-21	21	20.25	21.44	21.51	20.812	3.4
P329-24	24	23.25	24.44	24.51	23.812	3.8
P329-30	30	29.25	30.44	30.51	29.812	4.7

### RS 50 Chain with .625 Pitch, .200" Pin Diameter

Dimensions in inches

U.S. TSUBAKI Chain Number	Nominal Width	Plate to Plate		From Pin Head to End C	Roller C.L. to C.L. D	Average Weight lbs./ft.
		Width A	Overall Riveted B			
P800-12	12	11.10	12.60	12.67	11.812	2.2
P800-15	15	14.10	15.60	15.67	14.812	2.8
P800-18	18	17.10	18.60	18.67	17.812	3.3
P800-21	21	20.10	21.60	21.67	20.812	3.6
P800-24	24	23.10	24.60	24.67	23.812	4.1
P800-30	30	29.10	30.60	30.67	29.812	4.9

### Single Cottered Connecting Pins

Dimensions in inches

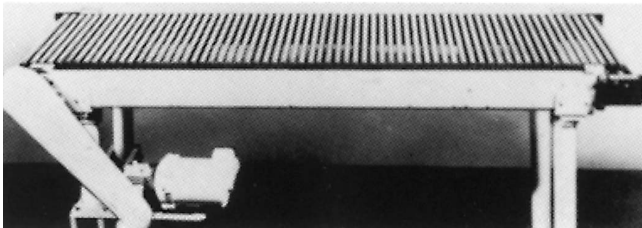
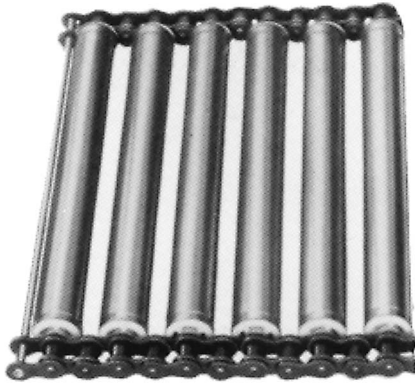
U.S. TSUBAKI Chain			Nominal Width
RS40	RS50		
P329-CP12	P800-CP12		12
P329-CP15	P800-CP15		15
P329-CP18	P800-CP18		18
P329-CP21	P800-CP21		21
P329-CP24	P800-CP24		24
P329-CP30	P800-CP30		30

### Two-Pitch Connecting Links

Dimensions in inches

U.S. TSUBAKI Chain			Nominal Width
RS40	RS50		
P329-RS12	P800-RS12		12
P329-RS15	P800-RS15		15
P329-RS18	P800-RS18		18
P329-RS21	P800-RS21		21
P329-RS24	P800-RS24		24
P329-RS30	P800-RS30		30

# Live Tubular Roller Chain



This chain consists of two parallel strands of RS40 chain with 3/4" diameter live tubular rollers on 1" spacing. The chains can be placed at the end or any intermediate point of a line where variations in speed or stoppage of conveyed goods may occur. Placed next to slicing or wrapping machines, they act as accumulators.

Each chain is assembled with connecting pins acting as tie bars every 12". The pins have milled flats and fit into a D-shaped hole in the link plate to prevent pin rotation and give longer life. Chains are furnished in ten-foot sections. The tubular rollers rotate on either oil-impregnated iron or plastic bearings. Removable two-pitch connecting links are available.

**Ordering Information.** Chains, connecting links and rollers are also available plated or in stainless steel. Either a plastic or an oil-impregnated bearing must also be specified. Chains and connecting links are ordered separately. One connecting pin is supplied with each chain section or connecting link. Additional pins may be ordered separately. Specify chain number and the material/bearing combination desired.

## Single Cottered Connecting Pins

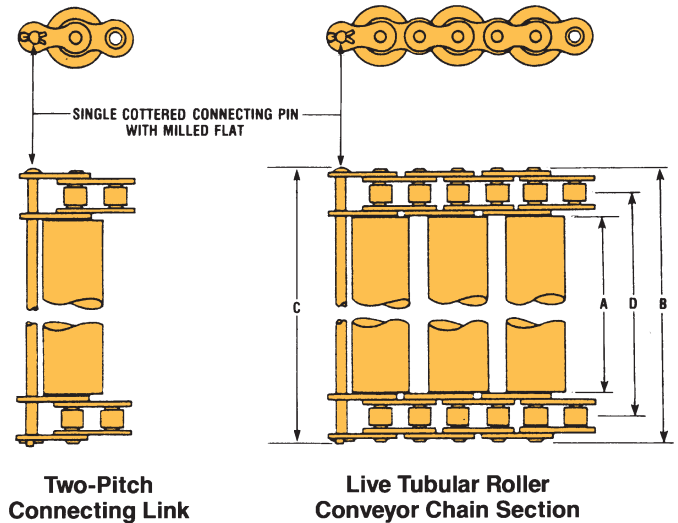
Dimensions in inches

U.S. TSUBAKI Chain Number	Nominal Width
TP329-CP12	12
TP329-CP15	15
TP329-CP18	18
TP329-CP21	21
TP329-CP24	24
TP329-CP30	30

## Two-Pitch Connecting Links

Dimensions in inches

U.S. TSUBAKI Chain Number	Nominal Width
TP329-RS12	12
TP329-RS15	15
TP329-RS18	18
TP329-RS21	21
TP329-RS24	24
TP329-RS30	30



RS 40 Chain with .500 Pitch, .750" Roller Diameter  
Dimensions in inches

U.S. TSUBAKI Chain Number	Nominal Width	Plate to Width A	Overall Riveted B	From Pin Head to End C	Roller C.L. to C.L. D	Average Weight lbs./ft.
TP329-12	12	11.25	12.44	12.51	11.812	4.3
TP329-15	15	14.25	15.44	15.51	14.812	5.3
TP329-18	18	17.25	18.44	18.51	17.812	6.2
TP329-21	21	20.25	21.44	21.51	20.812	7.2
TP329-24	24	23.25	24.44	24.51	23.812	7.6
TP329-30	30	29.25	30.44	30.51	29.812	9.1