

# Plastic Top Roller Conveyor LAMBDA®

LAMBDA for accumulating conveyors.

- Narrow width accumulating chain
- Lube-free operation
- Operates in temperatures up to 176°F (due to plastic components)

## Single Pitch Top Roller Conveyor LAMBDA®

Chain Number	Pitch P	Width Between Roller Link Plates W	Roller Dia. R	Pin			Link Plate	
				D	L <sub>1</sub>	L <sub>2</sub>	H	T
RSC40-LAMBDA-TRP	.500	.312	.312	.156	.325	.392	.472	.060
RSC50-LAMBDA-TRP	.625	.375	.400	.200	.406	.472	.591	.080
RSC60-LAMBDA-TRP	.750	.500	.469	.234	.506	.581	.713	.094

Chain Number	Attachment Dimensions									Approx. Weight lbs./ft.	
	DF <sub>1</sub>	DF <sub>2</sub>	C <sub>S</sub>	N	X <sub>S</sub>	ℓ	ℓ <sub>1</sub>	ℓ <sub>2</sub>	d	At Every Link	At Every Second Link
RSC40-LAMBDA-TRP	.433	.625	.500	.374	.687	.520	.325	.380	.156	0.62	0.57
RSC50-LAMBDA-TRP	.591	.750	.626	.500	.876	.638	.406	.469	.200	1.05	0.93
RSC60-LAMBDA-TRP	.709	.875	.720	.626	1.033	.811	.506	.600	.234	1.55	1.36

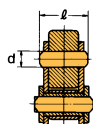
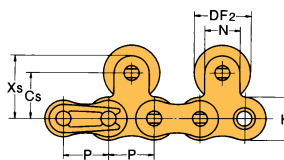
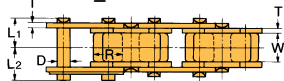
## Double Pitch Top Roller Conveyor LAMBDA®

Chain Number	Pitch P	Width Between Roller Link Plates W	Roller Dia. R		D	Pin		Link Plate	
			"S" roller	"R" roller		L <sub>1</sub>	L <sub>2</sub>	H	T
C2040-LAMBDA-TRP	1.00	.312	.312	.625	.156	.325	.392	.472	.060
C2050-LAMBDA-TRP	1.25	.375	.400	.750	.200	.406	.472	.591	.080
C2060H-LAMBDA-TRP	1.50	.500	.469	.875	.234	.573	.652	.677	.125

Chain Number	Attachment Dimensions						Approx. Weight lbs./ft.	
	D <sub>F</sub>	C <sub>S</sub>	X <sub>S</sub>	ℓ <sub>1</sub>	ℓ <sub>2</sub>	d	"S" Roller	"R" Roller
C2040-LAMBDA-TRP	.625	.591	.827	.333	.396	.205	0.61	0.85
C2050-LAMBDA-TRP	.750	.748	1.043	.413	.508	.240	0.97	1.28
C2060H-LAMBDA-TRP	.875	.906	1.244	.581	.699	.318	1.86	2.33

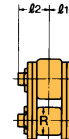
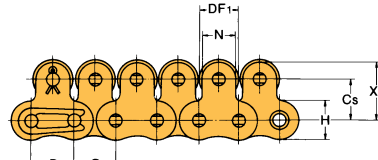
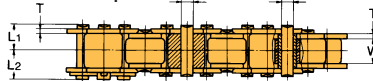
When top rollers are spaced more than every second link.

Note: DF<sub>2</sub>



When top rollers are spaced every link.

Note: DF<sub>1</sub>



Connecting link is clip type.