

U.S. TSUBAKI FREE FLOW CHAIN

DOUBLE PLUS® Chain

- Standard DOUBLE PLUS Chain
- DOUBLE PLUS Chain with Snap Covers

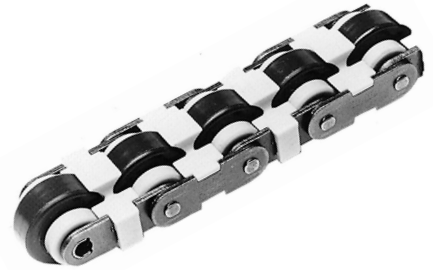


- Quiet
- Safe
- Quick Start Up
- Wide Selection

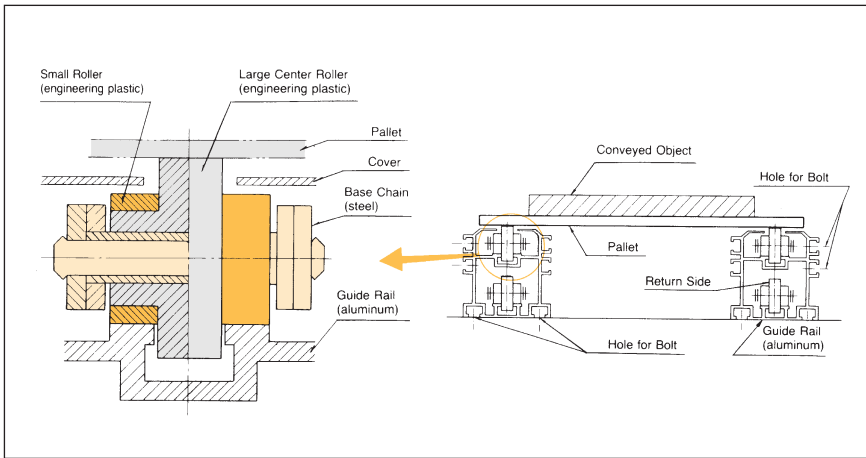
DOUBLE PLUS chain is available with guide rails, pallet guides, and sprockets.

The best solution for preventing jamming.

On conveyor lines, small parts, like nuts and bolts, can fall into the gaps between the guides and rollers, causing the chain to jam. U.S. Tsubaki DOUBLE PLUS chain with Snap Covers minimizes the gaps between the rollers and guide rails, eliminating chain jams caused by parts falling into the conveyor.



Construction



How U.S. Tsubaki DOUBLE PLUS chain works

- **When Conveying**
Friction between the larger center roller and the small rollers allows them to rotate together in unison. The difference in diameter of the rollers causes the speed of the conveyed object to be approximately **2.5 times** the speed of the chain.
- **When Accumulating**
The large roller rotates freely in the opposite direction of the small roller allowing conveyed objects to accumulate. We call this **free flow** conveying.

Model Identification

C2040 VRP- □ □ -A- □ □

Chain Size

VRP: Plastic roller type
VR: Steel roller type

HCP: Hard chrome plated
SS: Stainless steel

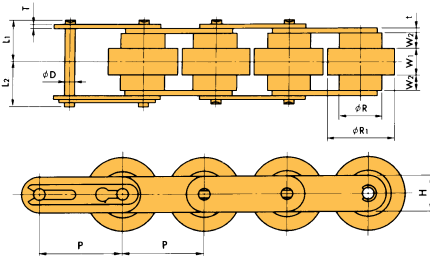
Roller Combination code for plastic ("A", "B", "C", or "D")

SC: Snap Covers

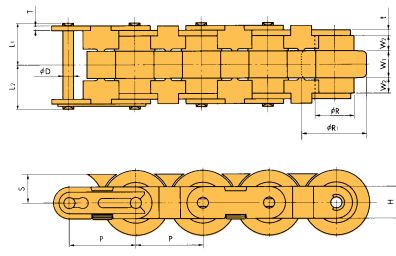
Choose the right rollers for your operation.

SERIES:	SIZE OF ROLLER:		SERIES BENEFITS:
	SMALL	LARGE	
A	Color: Gray	Brown	Maximum Allowable Tension
	Feature: Standard	Standard	
B	Color: Off-White	Brown	Quick Start-up
	Feature: High friction plastic	Standard	
C	Color: Gray	Black	Volume Resistivity of $10^6 \Omega \times \text{cm}$
	Feature: Standard	Electro-conductive Plastic	
D	Color: Off-White	Black	Quick Start-up AND Volume Resistivity of $10^6 \Omega \times \text{cm}$
	Feature: High friction plastic	Electro-conductive Plastic	

In addition to carbon steel, hard chrome plating, ULTRA WP® and stainless steel are available.



Standard DOUBLE PLUS® CHAIN



DOUBLE PLUS® CHAIN with SNAP COVERS

Note: For DOUBLE PLUS® chain with SNAP COVERS

- These base chains are specialized for SNAP COVERS.
- The SNAP COVERS cannot be attached to the standard type of DOUBLE PLUS chain.
- Offset links are not available for DOUBLE PLUS with SNAP COVERS.

DOUBLE PLUS® CHAIN

Chain No.	P	R	R ₁	W ₁	W ₂	t	T	H	D	L ₁	L ₂	Approx. Weight lbs./ft.		
												Plastic Roller	Steel Roller	
C2030VR & VRP														
C2030VR-SC & VRP-SC	0.75	0.469	0.720	0.315	0.157	0.060	0.060	0.354	0.141	0.474	0.522	0.40	0.94	
C2040VR & VRP														
C2040VR-SC & VRP-SC	1.00	0.625	0.969	0.406	0.224	0.080	0.060	0.472	0.156	0.622	0.669	0.67	1.68	
C2050VR & VRP														
C2050VR-SC & VRP-SC	1.25	0.750	1.205	0.512	0.280	0.094	0.080	0.591	0.200	0.770	0.837	0.94	2.49	
C2060VR & VRP														
C2060VR-SC & VRP-SC	1.50	0.875	1.441	0.610	0.335	0.125	0.125	0.677	0.234	0.964	1.039	1.34	3.76	
C2080VRP														
C2080VRP-SC	2.00	1.125	1.890	0.787	0.591	0.156	0.156	0.906	0.312	1.409	1.496	2.62	—	

- Steel roller type (VR series) is available for 14°F ~ 302°F
- Plastic roller type (VRP series) is available for 14°F ~ 140°F
- C2080VRP has cotted connecting link.

Sprockets for DOUBLE PLUS® CHAIN (For DOUBLE PLUS “VR,” “VRP,” “VR-SC,” & “VRP-SC”)

Sprocket No.	Hub Type	Number of Teeth	Pitch Dia. D _p	Outer Dia. D _o	Tooth Thickness T	Stock Bore Dia. d	Hub Dia. D _h	Hub Length L	M	Approx. Weight lbs.
C2030VRP-10T-SC	B	10	2.427	2.480	0.118	0.500	1.457	0.984	0.602	0.44
C2040VRP-10T-SC	B	10	3.236	3.346	0.157	0.630	2.047	1.575	0.803	1.76
C2050VRP-10T-SC	B	10	4.045	4.213	0.197	0.630	2.598	1.772	1.004	3.31
C2060VRP-10T-SC	B	10	4.854	5.039	0.236	0.748	3.189	1.969	1.201	5.52
C2080VRP-10T-SC	B	10	6.472	6.772	0.472	0.906	4.331	2.638	1.870	15.40

