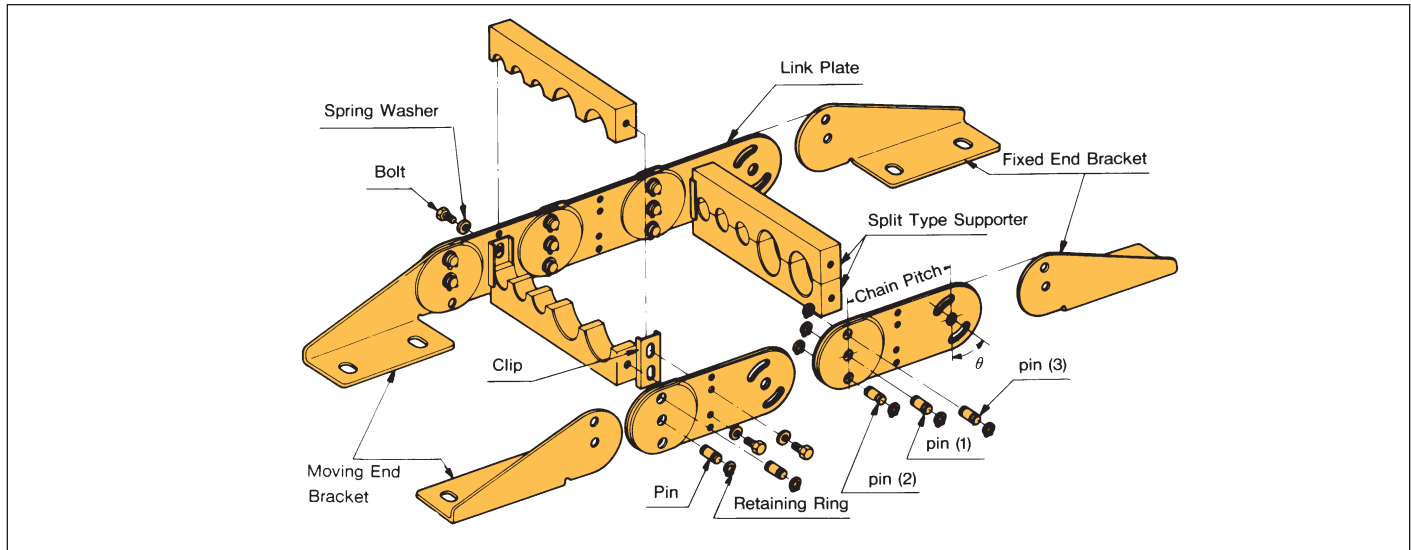


TK Cableveyor

CONSTRUCTION AND FEATURES

TK Cableveyor is constructed of steel chain with aluminum supporters to give high strength and durability for diverse applications. The holes of the supporters are made to fit the cables or hoses precisely. These cableveyors are very versatile and can fit most industrial machines.

TK Type

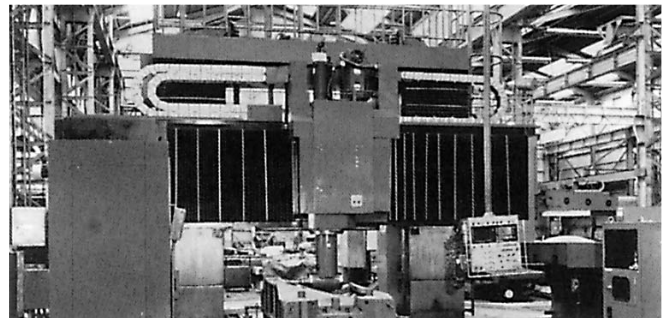


TK TYPE OVAL CABLEVEYOR

- TK type Cableveyor has been designed to protect workers from accidents by utilizing specially shaped link plates. This link plate design has solved the problems that may occur due to crevices between link plates.

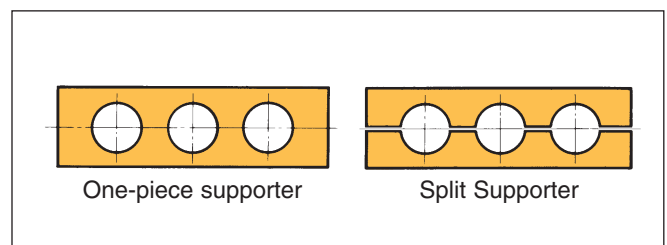


- All link plates are offset type. The pins at the moving connection are through hardened by an induction heat-treatment to provide high abrasion and deformation resistance. TK type Cableveyor is also effective against side force damage.
- Proper size holes will be made to your specifications. The holes on the stays are made to fit the diameter of the cables or hoses.
- By using the correct size holes in the stays, cables and hoses will be very steady and well protected.

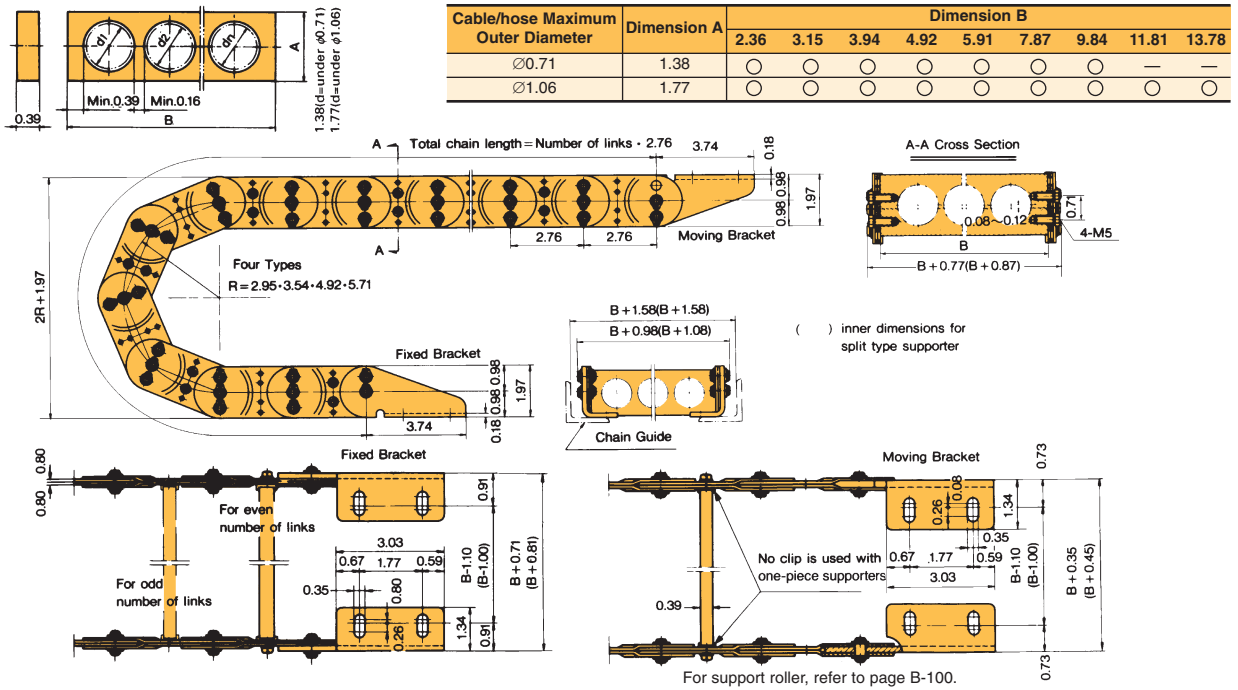


SUPPORTERS

There are two types of supporters for TK type Cableveyor, a one-piece supporter and a split supporter. The split supporter is very convenient for long moving strokes, if an odd-shaped attachment is used on the cables or hoses, or if a large number of cables or hoses must be installed.

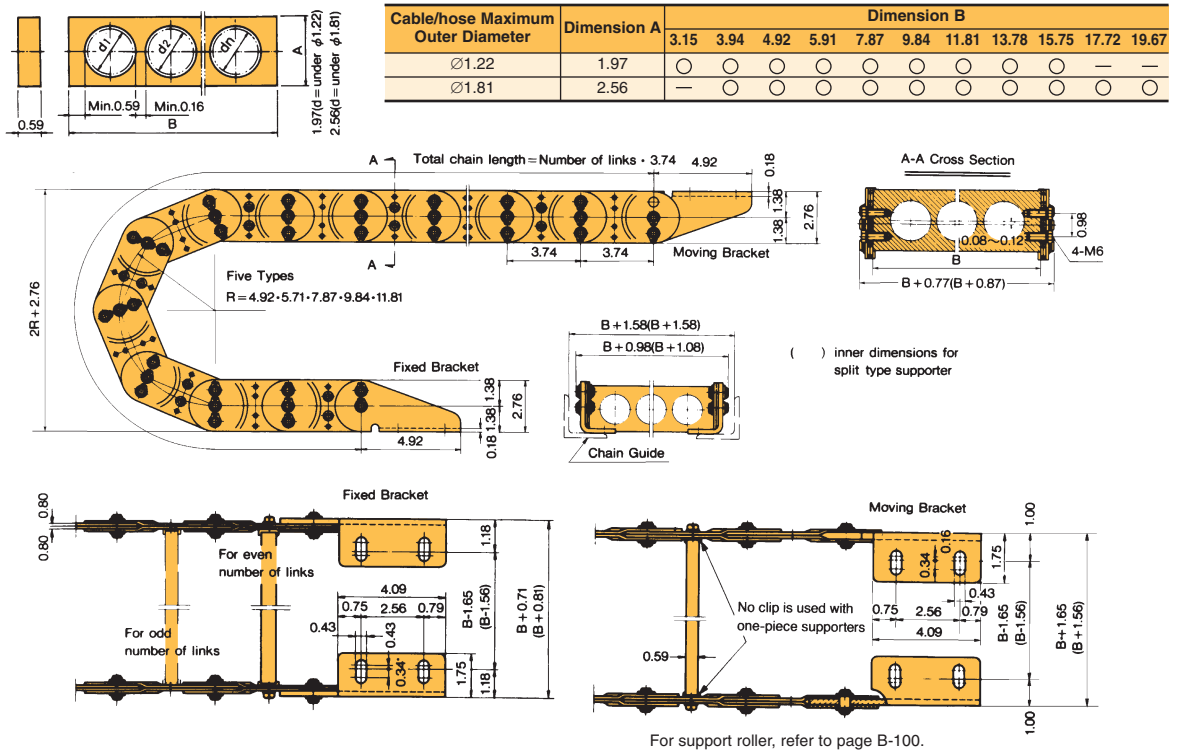


TK070

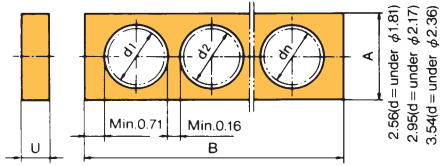


TK095

DIMENSIONS FOR STANDARD SUPPORTER

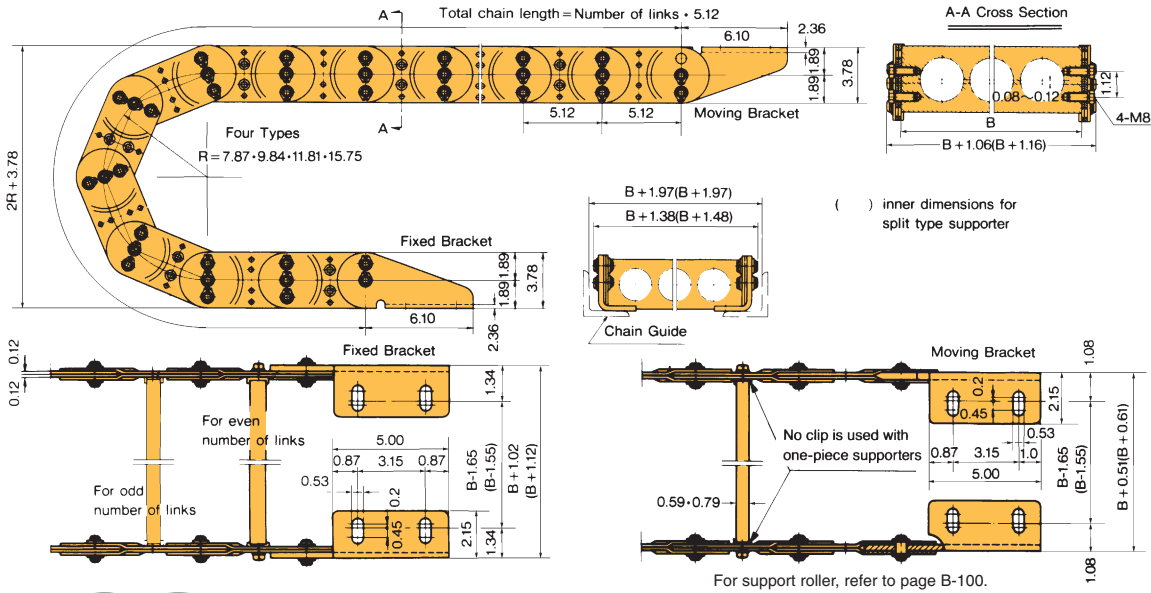


TKI30



Cable/hose Maximum Outer Diameter	Dimension A	Dimension B												
		3.94	4.92	5.91	7.87	9.84	11.81	13.78	15.75	17.72	19.69	21.65	23.62	
∅1.81	2.56	○	○	○	○	○	○	○	○	○	○	○	○	○
∅2.17	2.95	○	○	○	○	○	○	○	○	○	○	○	○	○
∅2.36	3.54	—	○	○	○	○	○	○	○	○	○	○	○	○

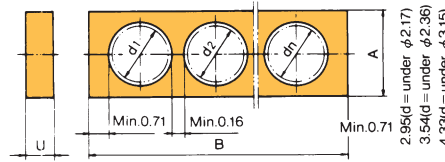
○ ...U=0.59 ⊙ ...U=0.78



B - CONVEYOR CHAINS

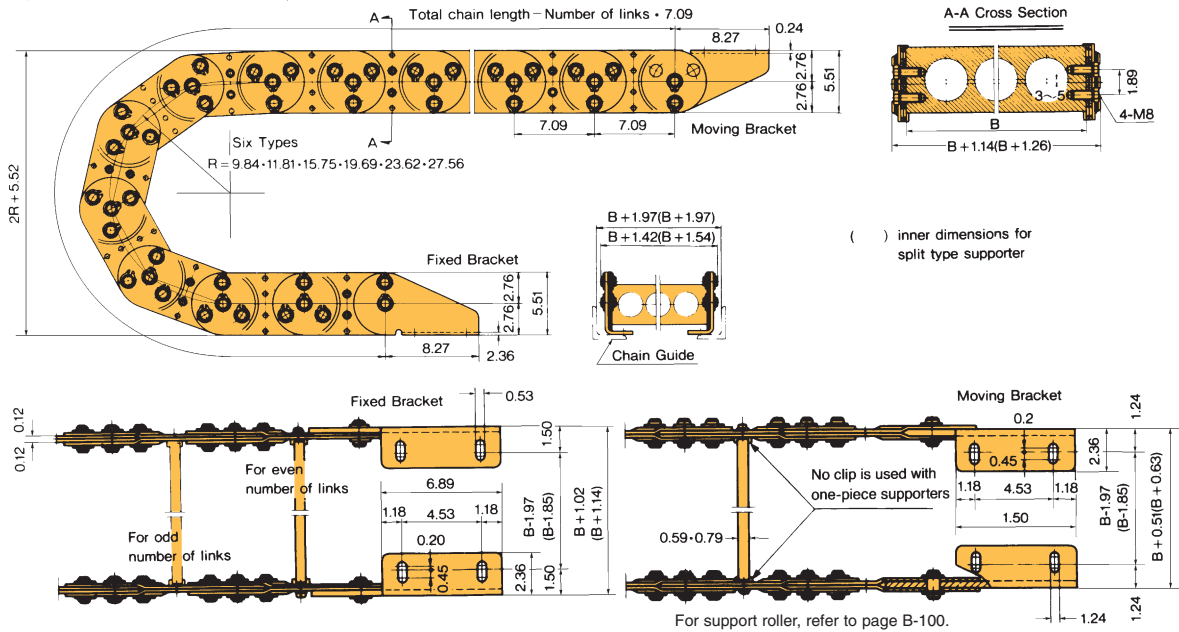
TKI80

DIMENSIONS FOR STANDARD SUPPORTER

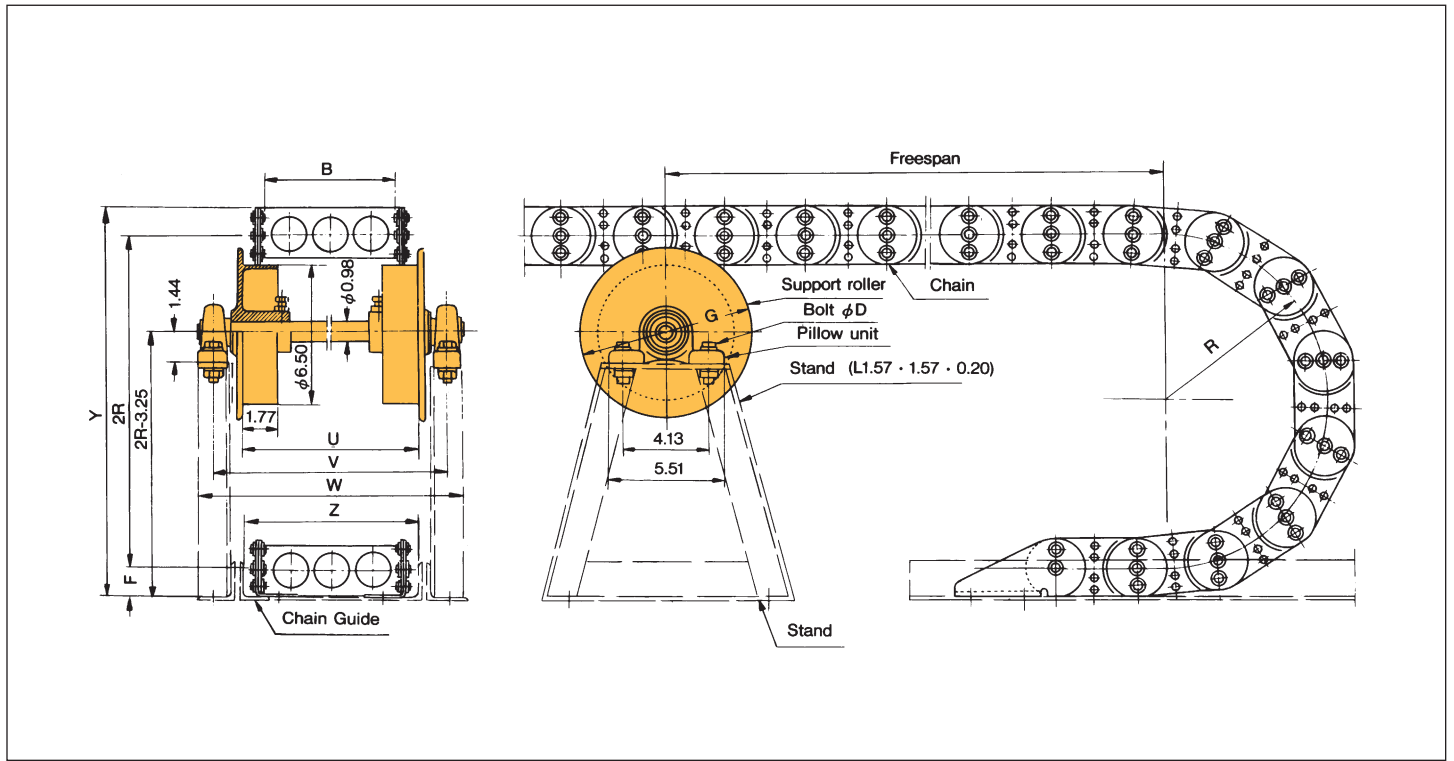


Cable/hose Maximum Outer Diameter	Dimension A	Dimension B											
		3.94	4.92	5.91	7.87	9.84	11.81	13.78	15.75	17.72	19.69	21.65	23.62
∅2.17	2.95	○	○	○	○	○	○	○	○	○	○	○	○
∅2.36	3.54	—	○	○	○	○	○	○	○	○	○	○	○
∅3.15	4.33	—	—	○	○	○	○	○	○	○	○	○	○

○ ...U=0.59 ⊙ ...U=0.78



TK TYPE SUPPORT ROLLER DIMENSIONS



Dimensions in inches

Appropriate Chain Size	Minimum Supporter Width B	Minimum Bending Radius R	d	G	M	N	U	V	W
TK070	3.15	4.92	0.98	8.07	5.51	4.13	B+1.77	B+4.53	B+6.02
TK095				11.22			B+2.17	B+4.92	B+6.42
TK130	3.94	7.87							
TK180	4.92	9.84							

Dimensions in inch

Appropriate Chain Size	L	F	X	Y	Z	Bolt Size D
TK070	1.77	0.98	1.44	2R+1.20	B+1.57	M0.47
TK095		1.38		2R+2.76		
TK130		1.89		2R+3.78	B+1.97	
TK180		2.76		2R+5.51		

- Note: 1. Support rollers are available for TK070 with R75 and R90. Your order will be custom made.
 2. The location of the stand for the Cableveyor depends on its usage. When ordering a stand, please advise us accordingly.
 3. In order to determine space requirements for installation of the Cableveyor, please refer to page B-104.
 4. When setting up the support roller, be careful to ensure that the roller's flanges are parallel.