

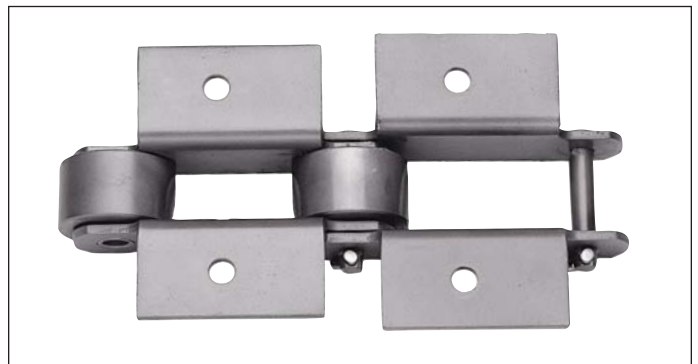
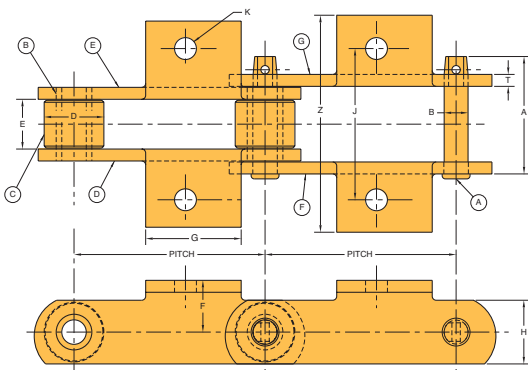
Asphalt Plants

Three types of chains are typically used in asphalt plants:

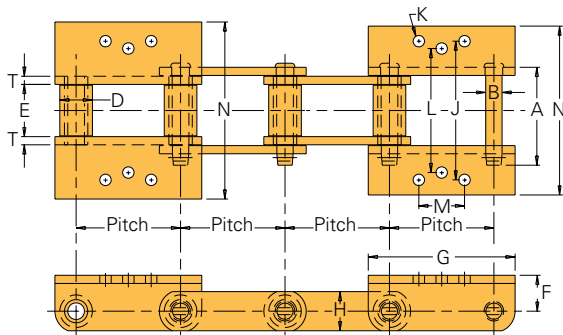
- Inclined Scraper Conveyor Chains are used to move the asphalt mix into storage hoppers.
- Drive Chains are used on rotating drums to mix the aggregate and asphalt.
- Bucket Elevator Chains are used to move aggregates to storage silos and are sometimes used to move the asphalt mix to storage hoppers.

The Union Chain Division supplies Inclined Scraper Conveyor Chains in 4" to 6" pitch with both K- and slotted-M-style attachments. These chains are designed and constructed to give the best combination of strength and toughness. The chains are balanced to ensure continued safe operation. Sidebars are hardened to resist the impact loading that may occur. Rollers are specially heat-treated to resist outside diameter abrasion inherent in asphalt conveyors. These special features make our chains long-lasting and keep your operation running smoothly.

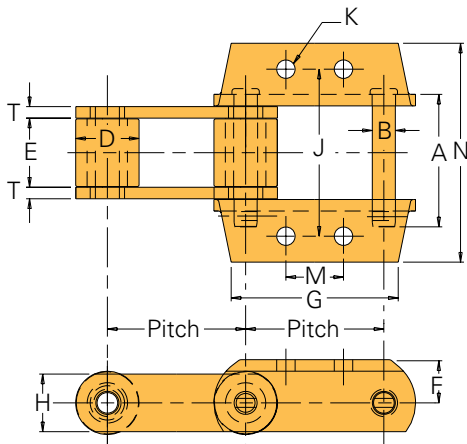
K-11 Style Attachment



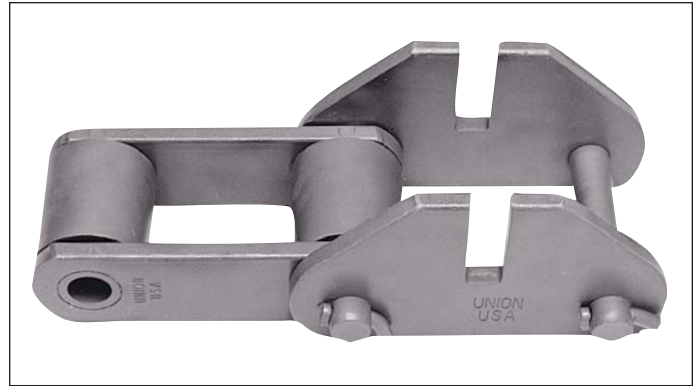
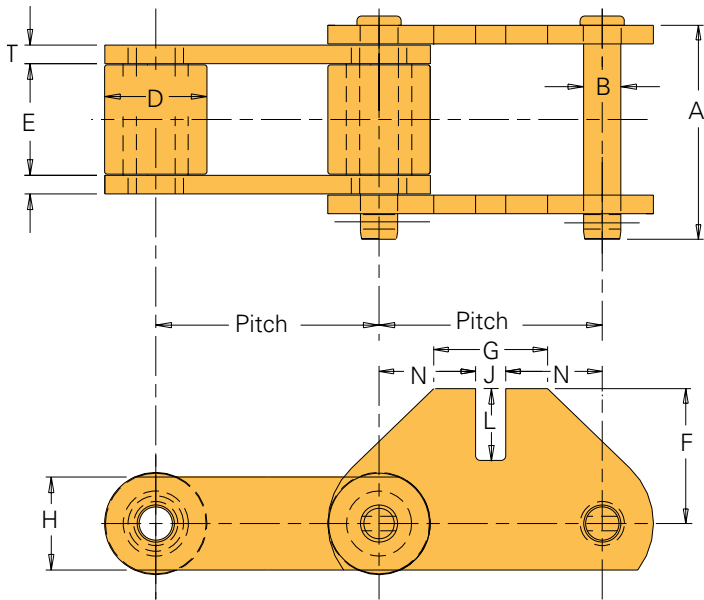
K-1/K-2 or K-3 Style Attachment



K-2 or K-44 Style Attachment



MM-1 Style Attachment



Incline Conveyor Chart

All dimensions are in inches unless otherwise indicated.

| Dwg. No. | Description | Pitch | Pin | | Inside Width E | Roller Dia. D | Sidebar | | Attachment | | | | | | Bolt Dia. K | Average Tensile Strength | Max. Work Load (lbs.) | Approx. Weight (lbs./ft.) |
|----------|---|-------|------|------|-------------------|------------------|---------|------|------------|------|------|------|------|------|----------------|--------------------------|-----------------------|---------------------------|
| | | | A | B | | | H | T | F | G | M | N | J | L | | | | |
| P-10024 | 2111/K-11 E/Pitch | 6 | 3.69 | 0.75 | 1.56 | 1.88 | 2.00 | 0.38 | 1.63 | 3.00 | — | 6.79 | 4.75 | — | 0.69 | 83,000 | 5,900 | 12.1 |
| P-10020 | U-3945/K-3 E/3rd Pitch | 4 | 3.75 | 0.63 | 2.00 | 1.25 | 1.50 | 0.31 | 1.38 | 5.63 | 1.75 | 6.50 | 5.31 | 4.75 | 0.44 | 44,000 | 5,740 | 9.8 |
| P-10021 | U-3952/K-2 *E/3rd Pitch | 4 | 4.13 | 0.75 | 2.00 | 1.44 | 1.75 | 0.38 | 1.63 | 6.00 | 1.75 | 6.69 | 5.50 | — | 0.53 | 60,000 | 7,220 | 12.8 |
| P-10022 | 3433 w/K-1/K-2 E/3rd (1.5" roller) | 4 | 4.13 | 0.63 | 2.13 | 1.50 | 1.50 | 0.38 | 1.00 | 2.82 | 1.75 | 4.84 | 5.31 | 4.75 | 0.41 | 40,000 | 6,300 | 9.7 |
| P-10023 | U-3940/K-2 E/2nd Pitch | 6 | 4.06 | 0.75 | 2.00 | 1.63 | 2.25 | 0.38 | 2.00 | 7.38 | 2.31 | 7.78 | 6.25 | — | 0.56 | 90,000 | 7,220 | 14.8 |
| P-10025 | 856/K-24 E/2nd Pitch | 6 | 5.75 | 1.00 | 3.00 | — | 2.50 | 0.50 | 1.88 | 7.25 | 2.50 | 9.50 | 7.25 | — | 0.75 | 145,000 | 14,000 | 16.5 |
| P-10026 | U-9856/K-44 E/2nd Pitch | 6 | 5.75 | 1.00 | 3.00 | 2.75 | 2.50 | 0.50 | 1.88 | 7.25 | 2.50 | 9.52 | 7.25 | — | 0.81 | 140,000 | 14,000 | 30.0 |
| P-10027 | U-9856/MM-1 ¹ E/2nd Pitch | 6 | 5.75 | 1.00 | 3.00 | 2.75 | 2.50 | 0.50 | 3.75 | 3.06 | — | 2.59 | 0.81 | 2.75 | — | 140,000 | 14,000 | 29.1 |

¹Verify attachment sidebar slot width and depth dimensions prior to ordering
* Square hole on attachment

Make In-Line Inspections Easy

Put machinery access at your fingertips. ONE-TOUCH INSPECTION DOOR® is a dust- and rain-tight inspection and service door for conveyors, as well as processing and handling equipment. These pre-fabricated units are in-stock and ready-to-go for easy installation at the job site. Once in place, ONE-TOUCH INSPECTION DOOR allows for quick and simple inspection without the need for special tools: just lift the lever! No bolts to loosen and no covers to misplace. One touch is all it takes...it's that simple. For more information, see the ONE-TOUCH INSPECTION DOOR description in Section C.

To locate compatible sprockets for your chain, refer to the Product Cross-Reference in Section D.

Note: Dimensions are subject to change. Contact Union Chain to obtain certified prints for design and construction.

ONE-TOUCH INSPECTION DOOR® is a registered trademark of Tsubaki Conveyor of America, Inc.

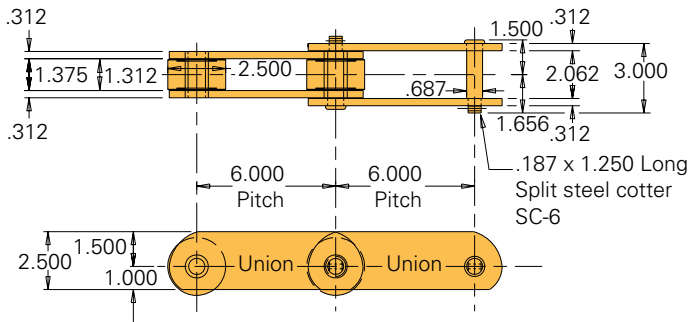
THE UNION SOLUTION

- High quality, tough chains
- Withstands impact loads
- Reliability
- Durability
- Strong, long-lasting

High Sidebar Roller Conveyor Chain/ CC5 Chain

CC5 High Sidebar Roller Conveyor Chain is the most widely used conveyor chain in the auto industry, and no wonder:

- CC5 meets industry quality standards, which means better reliability for your application.
- CC5 rolls on any flat, firm surface, which means “instant conveying” for auto parts.
- CC5 can be customized, including welded-on flat tops, hex holes in sidebars for gravity roll conveyors, top rollers, and custom-specified attachments.



CC5 Specifications

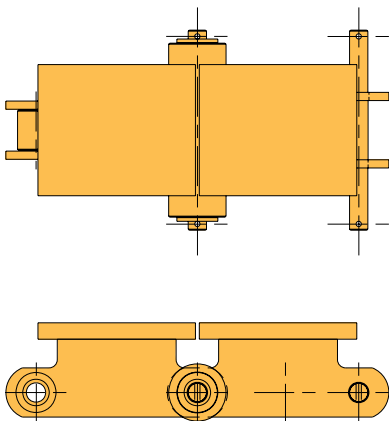
| | |
|-----------------------------|-------------|
| Standard Ultimate Strength | 50,000 lbs. |
| Max. Allowable Working Load | 4,800 lbs. |
| Weight per Foot | 11 lbs. |

Flat Top and Gull Wing Chains

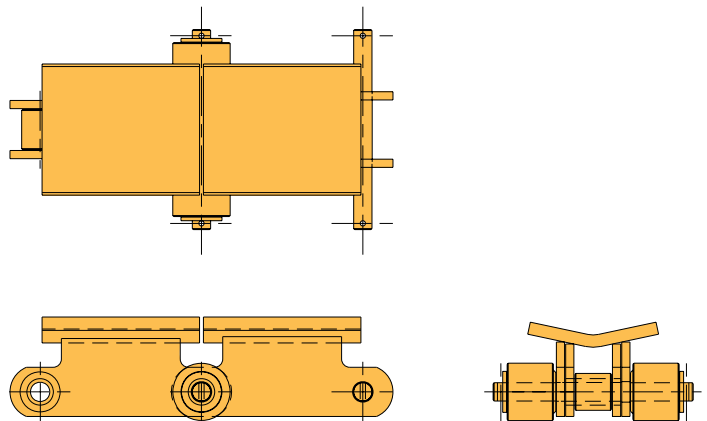
Double strand Flat Top Chain with outboard carrying rollers moves heavy loads with dependability. Top plate surfaces may be smooth, checkered, or nonskid. Chain pitch ranges from 4" to 24". Gull Wing Chain provides an alternative to Flat Top,

keeping the conveyed materials in line during movement. Either style can be made from a variety of materials and heat-treated to stand up to extreme conditions.

Flat Top Chain



Gull Wing Chain



To locate compatible sprockets for your chain, refer to the Product Cross-Reference in Section D.

Note: Dimensions are subject to change. Contact Union Chain to obtain certified prints for design and construction.