

Your partner for crane applications



Location: Indonesia  
Travel length: 300 m  
Speed: 1.5 m/s  
Acceleration: 0.5 m/s<sup>2</sup>  
Additional load: 15 kg/m  
Cable carrier: MC1300

Ship-Unloader



Location: Nottingham, England  
Travel length: 215 m  
Speed: 0.4 m/s  
Acceleration: 0.08 m/s<sup>2</sup>  
Additional load: 5 kg/m  
Cable carrier: 2 x 5 band MC1250

Mobile onshore power supply



Travel length: 115 m  
Speed: 4.0 m/s  
Acceleration: 0.5 m/s<sup>2</sup>  
Additional load: 7 kg/m  
Cable carrier: RSC TKHD90

Ship to shore crane  
with roller supported chain system



Travel length: 100 m  
Speed: 4.0 m/s  
Acceleration: 0.5 m/s<sup>2</sup>  
Additional load: 5 kg/m  
Cable carrier: RSC MC0950

Ship to shore crane  
with roller supported chain system



The global TSUBAKI KABELSCHLEPP sales network – near you worldwide



**TSUBAKI KABELSCHLEPP**  
7100 W Marcia Rd,  
Milwaukee, WI 53223  
Tel: 800-443-4216  
kabelschlepp.com

**TSUBAKI KABELSCHLEPP worldwide**  
Contact, addresses and much more at  
[tsubaki-kabelschlepp.com](http://tsubaki-kabelschlepp.com)



**Corporate Headquarters**  
U.S. Tsubaki Power Transmission, LLC  
301 E. Marquardt Drive  
Wheeling, IL 60090  
Tel: 800.323.7790



**Roller Chain Division**  
821 Main St.  
Holyoke, MA 01040  
Tel: 800.323.7790



**Conveyor & Construction Chain Division**  
1010 Edgewater Drive  
Sandusky, OH 44870  
Tel: 800.537.6140



**Sprocket Manufacturing**  
1630 Drew Road  
Mississauga, ON L5S 1J6  
Tel: 800.323.7790



**Cable & Hose Carrier Division**  
7100 W. Marcia Road  
Milwaukee, WI 53223  
Tel: 800.443.4216

Note: In accordance with the policy of U.S. Tsubaki Power Transmission, LLC to consistently improve its products, the specifications in this brochure are subject to change without notice. The logos, brand names or product names in this brochure are trademarks or registered trademarks of Tsubakimoto Chain Co. and its subsidiaries in Japan, the U.S. and other countries.

©2019 U.S. Tsubaki Power Transmission, LLC  
All Rights Reserved. Printed in the U.S.A.  
11/19 Rev 0 L15042



Cable carrier systems  
for port cranes



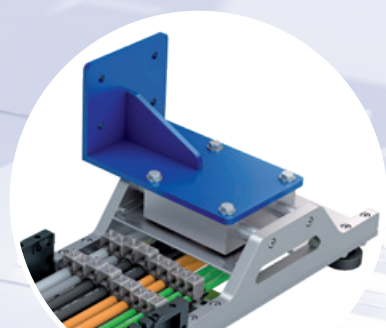


## Costs down – service life up Cable carrier systems for port cranes

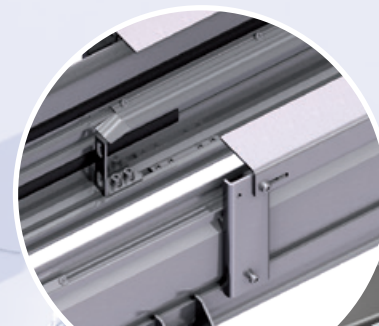
TSUBAKI KABELSCHLEPP develops customized solutions for cable carrier systems in cranes. Our decades of experience from hundreds of realized projects in various industries with diverse demands on our cable carrier systems, leads to new custom and application-specific solutions for our customers. Our specialists will support you from the planning and design stage through to the onsite installation and start-up of the tested complete system.



Suitable also for roller-mounted applications (RSC)



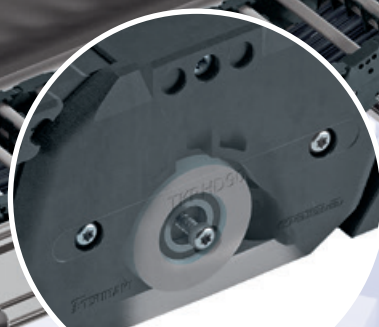
Floating drive arm



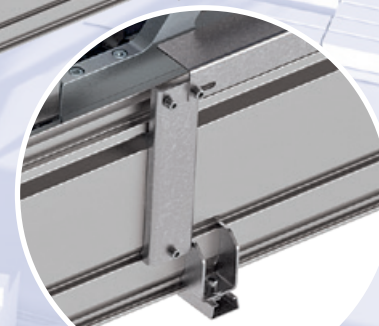
Lift-stop device and fasteners to attach pipes and hoses to the outside of the channel



Replaceable glide shoes



Cable carrier with integrated roller



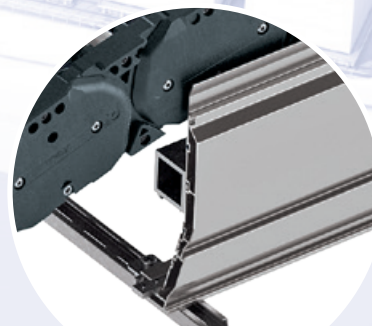
Mounting kits external and internal



Condition monitoring



System channel and maintenance-friendly housing in galvanized or stainless steel



Aluminum guide channel with gliding support

## TOTALTRAX® Complete systems From planning to the final complete system

Use our know-how. Working jointly with you, our experienced specialists can provide pre-sale support, including planning and design services through after sales service and support.

One order, one contact person, components ideally matched to each other, including the cable and hose carrier, the electrical cables, the hydraulic and pneumatic hoses and the connectors.

You receive the complete system in one delivery along with a guarantee certificate, if desired – in short: TOTALTRAX®.

Reduce your storage costs for cable and hose carriers, cables and connectors with TOTALTRAX®.

We supply all components Just-In-Time to your production facility or directly to the installation site.



## Supervised installation service

Let our engineering team provide on site support during the installation of the cable and hose carrier system. We can provide the additional support you might need to insure a flawless installation.



**Want us to optimize your operations?  
That's what we do.**

Call us today to schedule  
an on-site visit 800-323-7790