



# Gripper Chain™

For form, fill, and vacuum seal  
wrapping applications

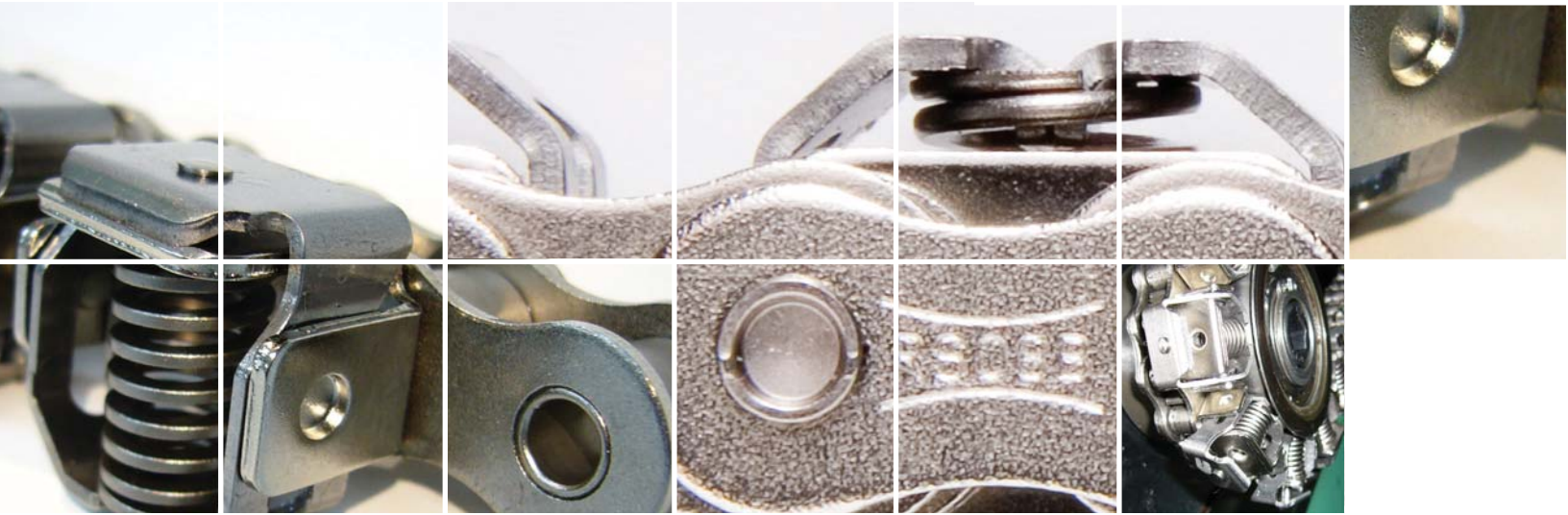
**The complete package — only from U.S. Tsubaki**

- Reliable performance
- Extended wear life
- Competitive price
- Quick delivery



Tsubaki: The choice for chain™

# Tsubaki Gripper Chain™



## A formidable new force has taken hold of wrapping operations: Gripper Chain™ from Tsubaki.

Our high-performance roller chain is now available with both conventional and innovative new side swivel gripper attachments for form, fill, and vacuum seal applications.

### Enhanced operation

Tsubaki gripper attachments feature reliable clamping mechanisms to ensure precise positioning. High-performance springs are designed to last more than 10 million cycles, even at high speeds. Our Type K attachment's side-swivel design allows optimal material feed through to ensure your lines run smoother.

### Exclusive! Quickly cut to length

Tsubaki is the only manufacturer to offer Gripper Chain™ with recessed riveted pins for easy chain length adjustment. Keep production rolling with less downtime.



## Get a grip on truly profitable performance

Discover the difference Tsubaki's high-quality base chain makes in your bottom line.

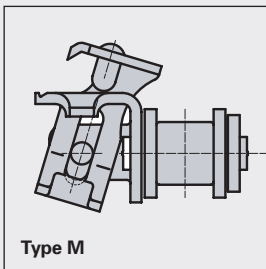
- Lower maintenance costs
- Increased uptime
- Increased productivity

### Quick, uniform start-up

Factory pre-loading minimizes initial chain elongation. Colored connecting links are easy to identify while in service and convenient to install with retaining clips.

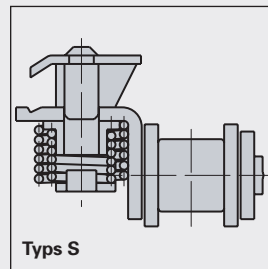


## Attachment design



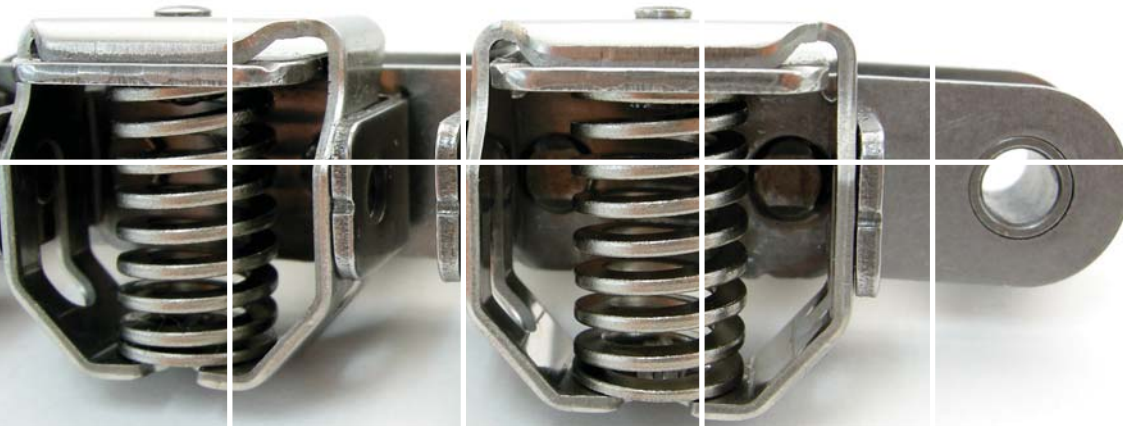
Type M

The clamping mechanism on Tsubaki's Type M gripper attachments opens vertically, then sideways for easy film engagement.



Types S

High-quality Standard attachments which open straight up and down, are also available.



### **Extended service life**

FDA-approved food-grade (H3) lubricant is applied at the factory following assembly to ensure uniform coverage and protection of each chain component.

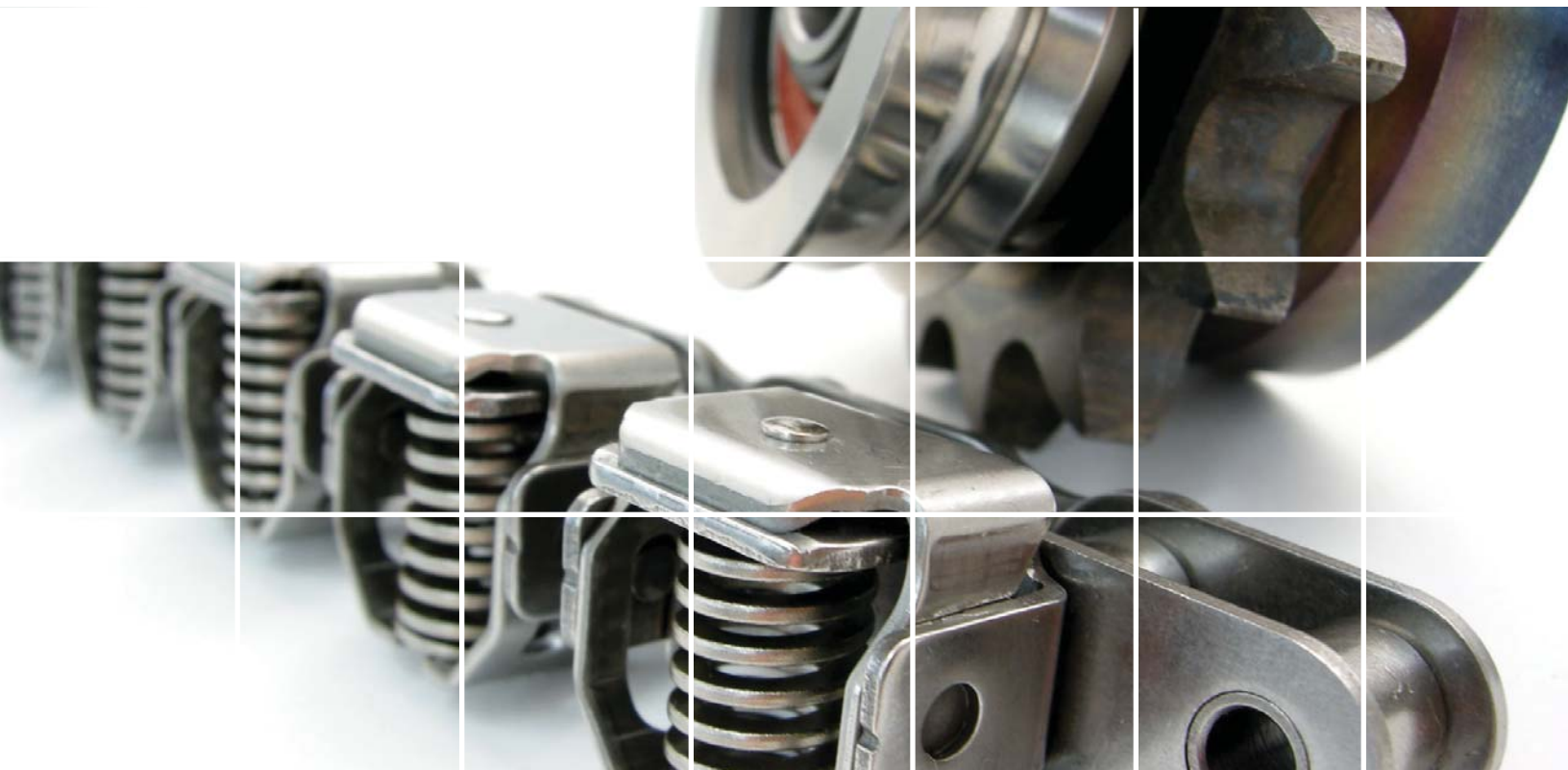
### **Extensive selection**

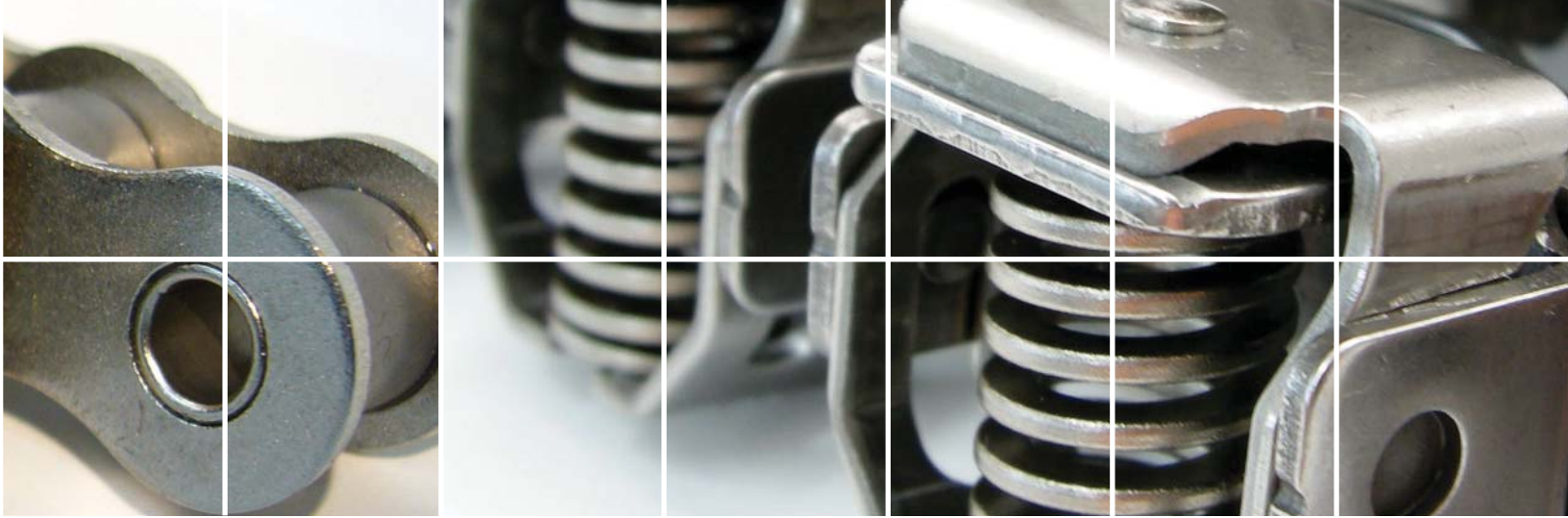
All nickel plated base chains plus 10B-1 corrosion resistant stainless steel chains are available immediately from stock. Alternate materials for special applications, such as maintenance-free Lambda® and corrosion resistant stainless steel can be quickly made to order for all sizes.

### **Stainless Steel Gripper Chains**

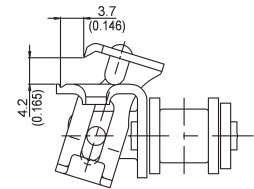
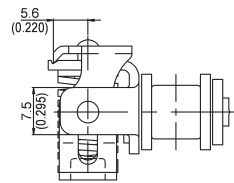
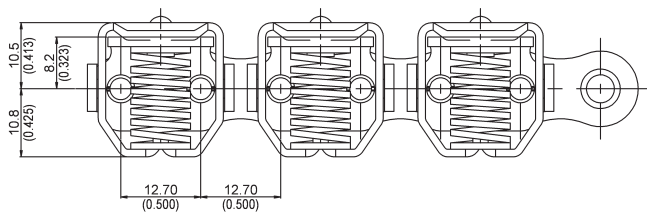
Tsubaki stainless steel corrosion resistant Gripper Chain™ is your solution for challenging environments. This chain combines the proven gripper design with wear resistant hardened stainless steel components that extend service life and offer the highest load capacity of all stainless steel chains manufactured by Tsubaki.

Precision machined sprockets for both Type M and Standard Gripper Chain™ applications are available on a made-to-order basis.

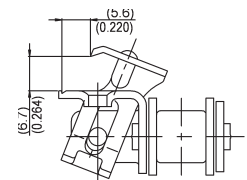
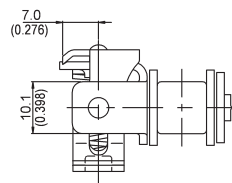
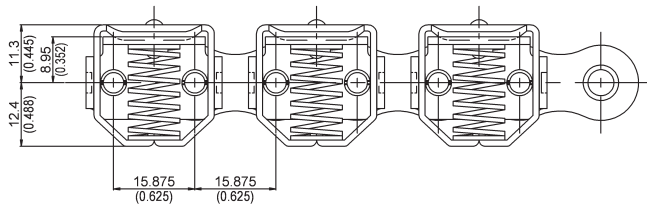




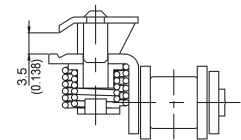
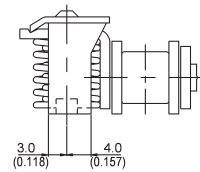
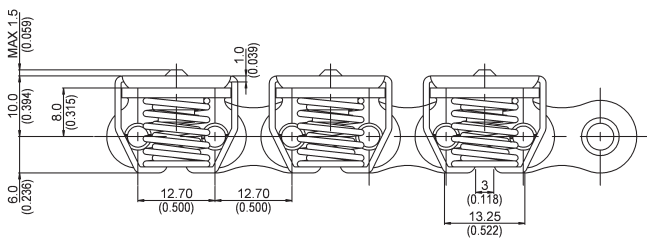
**RS08BNPKUTM and RS08BLKUTM Gripper Chain™**



**RS10BNPKUTM and RS10BLKUTM Gripper Chain™**

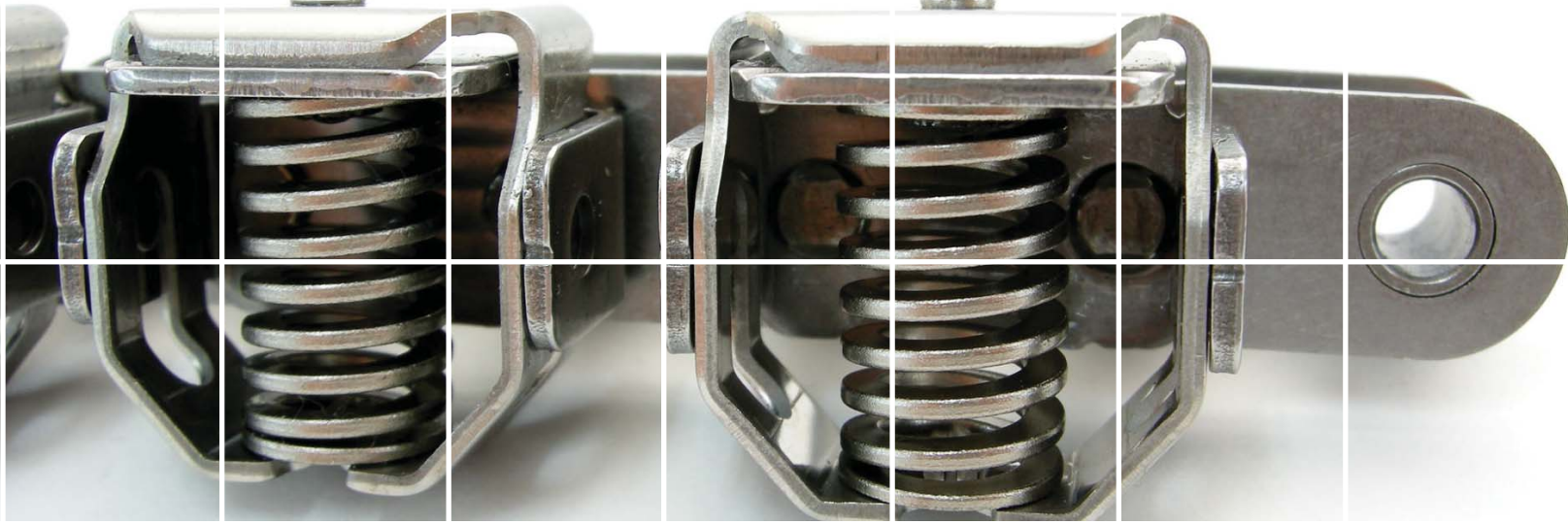


**RS08BNPKUTS and RS08BLKUTS Gripper Chain™**

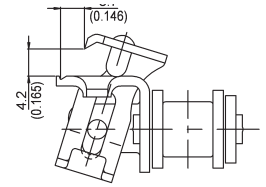
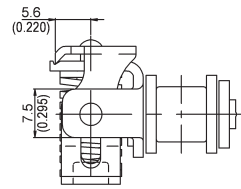
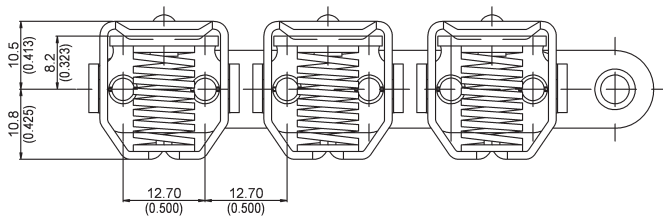


ISO Ref.	Chain No.	Connecting Link	Pitch		Roller Dia.		Inside Width		Clamp Type	Clamping Force	Materials		
			mm	in.	mm	in.	mm	in.			Base Chain	Clamp	Spring
08B-1	RS08BNPKUTM	RS08BNPKUTMCL	12.7	.500	8.51	.335	7.75	.305	Type M	50	NP	304SS	SA
10B-1	RS10BNPKUTM	RS10BNPKUTMCL	15.9	.625	10.16	.400	9.65	.380	Type M	70	NP	304SS	SA
08B-1	RS08BNPKUTS	RS08BNPKUTSCL	12.7	.500	8.51	.335	7.75	.305	Standard	55	NP	304SS	SA
08B-1	RS08BLKUTM	RS08BLKUTMCL	12.7	.500	8.51	.335	7.75	.305	Type M	50	NP Lambda®	304SS	SA
10B-1	RS10BLKUTM	RS10BLKUTMCL	15.9	.625	10.16	.400	9.65	.380	Type M	70	NP Lambda®	304SS	SA
08B-1	RS08BLKUTS	RS08BLKUTSCL	12.7	.500	8.51	.335	7.75	.305	Standard	55	NP Lambda®	304SS	SA

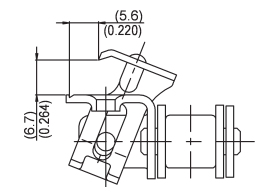
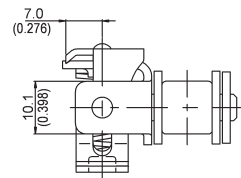
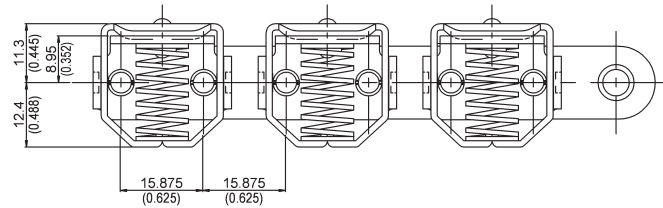
Products listed in green are in stock and available for immediate delivery.  
 NP = Nickel-Plated Steel SS = Stainless Steel SA = Special Alloy  
 Notes: Do not twist chain. Use care not to damage attachment when unwinding chain from reel.



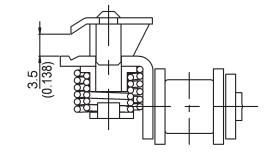
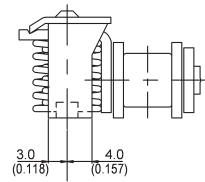
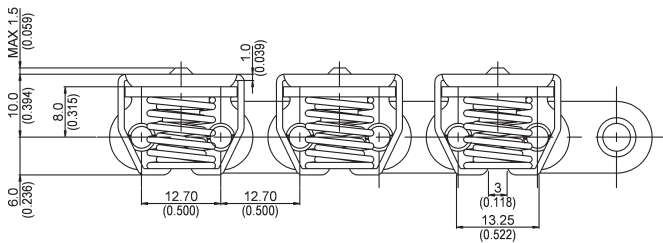
RS08BSSKUTM Gripper Chain™



RS10BSSKUTM Gripper Chain™



RS08BSSKUTS Gripper Chain™



ISO Ref.	Chain Number	Connection Link	Pitch		Roller Dia..		Inside Width		Clamp Type	Clamping Force	Materials		
			mm	in.	mm	in.	mm	in.			N	Base Chain	Clamp
08B-1	RS08BSSKUTM	RS08BSSKUTMCL	12.7	.500	8.51	.335	7.75	.305	Type M	50	SS	304SS	SA
10B-1	RS10BSSKUTM	RS10BSSKUTMCL	15.9	.625	10.16	.400	9.65	.380	Type M	70	SS	304SS	SA
08B-1	RS08BSSKUTS	RS08BSSKUTSCL	12.7	.500	8.51	.335	7.75	.305	Standard	55	SS	304SS	SA

Products listed in green are in stock and available for immediate delivery.  
 NP = Nickel-Plated Steel SS = Stainless Steel SA = Special Alloy  
 Notes: Do not twist chain. Use care not to damage attachment when unwinding chain from reel.

# Gripper Chain™

For form, fill, and vacuum seal wrapping applications



Tsubaki: The choice for chain™

- ASME/ANSI Chain
- Attachment Chain
- Corrosion Resistant Chain
- Maintenance-free Chain
- Plastic Chain
- Custom/Specialty Chain
- Sprockets
- Power Transmission Components



**Corporate Headquarters**

301 E. Marquardt Drive  
Wheeling, IL 60090  
Tel: (800) 323-7790  
Tel: (847) 459-9500  
Fax: (847) 459-9515  
[www.ustsubaki.com](http://www.ustsubaki.com)