



MORE INNOVATIVE SOLUTIONS FROM TSUBAKI®



SEALED JOINT
CHAIN OPTIONS



BACKSTOPS &
OVERRUNNING
CLUTCHES



STEEL CABLE
CARRIERS



CONTINUOUS-FLEX
CABLES



SMART TOOTH®
SPROCKETS



TITAN® SERIES
CHAINS



ATRA-FLEX®
COUPLINGS

EXCELLENCE THROUGH INNOVATION SINCE 1917

For over 100 years, Tsubaki has developed and manufactured the highest-quality products for power transmission and motion control. With a vast network of global production facilities, R&D resources and sales offices, Tsubaki remains committed to providing innovative solutions to customers' problems for the next 100 years.

ustsubaki.com



Corporate Headquarters
U.S. Tsubaki Power
Transmission, LLC
301 E. Marquardt Drive
Wheeling, IL 60090
Tel: (847) 459-9500
www.ustsubaki.com



Roller Chain Division
821 Main Street
Holyoke, MA 01040
Tel: (847) 459-9500



Conveyor & Construction
Chain Division
1010 Edgewater Drive
Sandusky, OH 44870
Tel: (419) 626-4560



Sprocket Manufacturing
1630 Drew Road
Mississauga, Ontario
L5S 1J6
Tel: (847) 459-9500



Cable & Hose
Carrier Division
7100 W. Marcia Road
Milwaukee, WI 53223
Tel: (414) 354-1994



Coupling Manufacturing
110 E. Garry Avenue
Santa Ana, CA 92707
Tel: (714) 432-8411



Note: In accordance with the policy of U.S. Tsubaki Power Transmission, LLC to consistently improve its products, the specifications in this brochure are subject to change without notice. The logos, brand names or product names in this brochure are trademarks or registered trademarks of Tsubakimoto Chain Co. and its subsidiaries in Japan, the U.S. and other countries.



CHAIN WEAR INDICATOR

Measure Chain Wear In No Time



ustsubaki.com

INSTANT AND EASY DEVICE To Measure Chain Wear in Seconds

TSUBAKI CHAIN WEAR INDICATOR

The interpretation of what chain wear elongation (“stretch”) is and how it can be accurately measured is a common issue when determining chain wear. Some customers utilize tape measures to determine chain stretch, while others use their own internal best practices and estimates to determine if the life of the chain has exhausted.

Tsubaki Chain Wear Indicators are designed to measure roller chain condition and determine critical wear. The indicator tools are made of high-quality material to withstand harsh and corrosive environments. The strong construction of the indicator tools ensures accurate measurements of the chains every time.



Inside of Wear Indicator Kit

RECOMMENDATIONS FOR USE

- 01 Use the chain wear indicators according to regular plant maintenance schedules
- 02 Always measure the chain at several key areas; chain typically does not wear evenly, and measuring in multiple areas will provide the most accurate measurements
- 03 Replacing the chain before reaching 1.5%-2% elongation will prevent significant sprocket wear, thus preventing costly downtime



Individual Tool Leather Pouch

WEAR INDICATOR KITS

ANSI STANDARD

- ✓ Tsubaki Part No. **ANSICHAINWEARINDIC**
- ✓ 5 Indicator Tools for ANSI Sizes 35-80
- ✓ ANSI & BS Chain Identifiers
- ✓ How-to-Use Instruction

BRITISH STANDARD (BS)

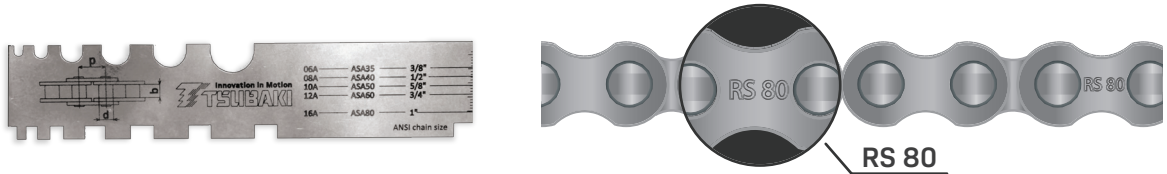
- ✓ Tsubaki Part No. **BSCHAINWEARINDICA**
- ✓ 5 Indicator Tools for BS Sizes 06B-16B
- ✓ ANSI & BS Chain Identifiers
- ✓ How-to-Use Instruction

INDIVIDUAL WEAR INDICATOR TOOL

- ✓ Individual Indicator Tools Available for Other Larger Sizes:
 - ANSI Sizes from 100 to 240
 - BS Sizes from 20B to 56B
- ✓ Individually Packaged in Leather Pouch

01

Use the chain identifier tool to identify whether the chain is ANSI or British Standard chain as well as a specific chain size based on the roller diameter and inside width of roller link. Or simply locate the stamp on a side plate of chain to determine the size.



02

Find the chain wear indicator tool in a kit that indicates the same chain size as the chain.



03

Pull the chain taut. Then place the mounting head of the tool on any roller of the chain and rest the indicator tip lightly along the taut chain.



04

The indicator tip will rest between links and show red or green depending on the degree of elongation. If it drops and still shows green, then there's no measurable elongation. If it drops and does not show any green, then the chain needs to be replaced.

