

# FOR OPTIMUM PERFORMANCE: CHOOSE TSUBAKI® SPROCKETS

## Tsubaki Sprockets are the perfect complement to Tsubaki Chains.

Ensure your application is running at its best with Tsubaki premium sprockets.

*All Tsubaki stock sprockets come with **Hardened Teeth** to RC35-50 standards, providing the most out of your sprockets while extending the life of your chain.*

### Advantages of Hardened Teeth

- Extends chain life up to 50%
- Offers up to twice the wear life
- Can be used in abrasive conditions
- Absorbs high shock loads
- Saves downtime and replacement costs
- Can be used in heavy loaded applications
- Ideal for high speeds



## Choosing the right sprocket for your chain is critical to the life of your applications

All Tsubaki sprockets are made from 1045 cold rolled carbon steel giving you the strength and workability that powdered metal cannot.

- Powdered metal sprockets cannot be hardened and therefore, prematurely wear.
- Powdered metal sprockets short life span results in frequent replacement and downtime.
- Powdered metal sprockets cannot be welded and will result in cracking when attempted.

Most customers are not aware that there is a choice between soft and hardened tooth sprockets. This results in inferior products being purchased with an increased rate of replacement. Unlike many competitors' sprockets, all Tsubaki stock sprockets come hardened as a standard, ensuring you the highest quality sprockets are interacting with the highest quality chain, keeping your application running stronger longer.



# OTHER PROBLEM SOLVING PRODUCTS FROM TSUBAKI®



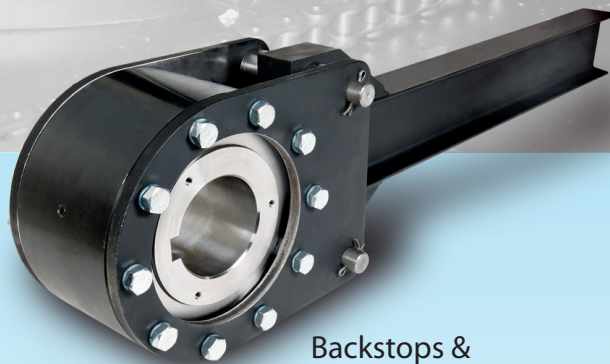
SMART TOOTH™  
Sprockets



Sealed Joint  
Chain Options



Steel  
Carriers



Backstops &  
Overrunning  
Clutches



Lube-Free Lambda® Chain



Continuous-Flex  
Cables



[www.ustsubaki.com](http://www.ustsubaki.com)  
800-323-7790

 **TSUBAKI**®

©2016 U.S. Tsubaki Power Transmission, LLC All Rights Reserved. L14022